

ERP2018
EC SOLUTIONS

airvent
Engineering For Future



专业-品质-科技感

EC/DC Fan



AirVent Fan Motor Industry Co., Ltd

Add : Wenling City ,Zhejiang Provice,China
Tel: 0086-574-87036936
Fax: 0086-574-87036936
Cell:0086-18367433976
airvent@airvent.com.cn
www.airvent.com.cn



airvent
Engineering For Future

冷通机电工业有限公司
AirVent Fan Motor Industry Co., Ltd

冷通机电工业有限公司是一家集各种风机、电机的研发、制造、生产、销售为一体的科技型公司，坐落于浙江省温岭市城南镇林岙工业区，创办于1998年，厂房面积一万多平方米。企业主要产品有外转子轴流风机、离心风机、罩极式电机。产品主要应用于各类冷冻、空调、通风、医疗、通讯和仪器仪表等设备。企业自创办以来，始终秉承“以科技创造精良、以质量取得信任、以创新满足需求”的经营理念，在发展中不断加大对新产品、新工艺、新设备、新的管理模式的投入，已取得了可喜的成绩。目前我公司拥有多项专利，通过了ISO9001:2008质量管理体系认证。轴流风机、离心风机、罩极式电机三大系列产品通过了欧洲CE认证、RoHS、CCC认证。轴流风机和离心风机均已取得国家质量监督检验检疫局颁发的生产许可证，并先后获得了市精细化管理样板企业、高新技术企业、纳税大户、市著名商标等荣誉称号。

在市场业务拓展上，我们的产品销往国内30多个省、市、自治区，并远销欧洲、非洲、南美洲、中东、东南亚等20多个国家地区。

我公司坚持以科技创新，以质量为保证，真诚期待与您的合作。



Airvent Fan Motor Industry Co., Ltd, is a professional high-tech company specialized in development and production of various kinds of fans and motors. The factory was found in 1998 with an area of more than 10000 m.

Our products mainly include external rotor axial fans, centrifugal fans, and shaded-pole motors. The products are extensively applied to refrigeration, ventilation, air conditioning, medical treatment, telecom and other equipments.

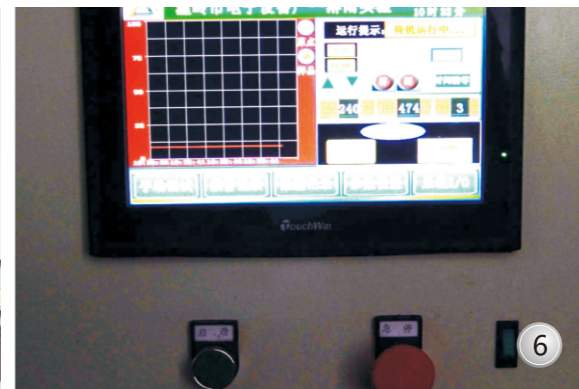
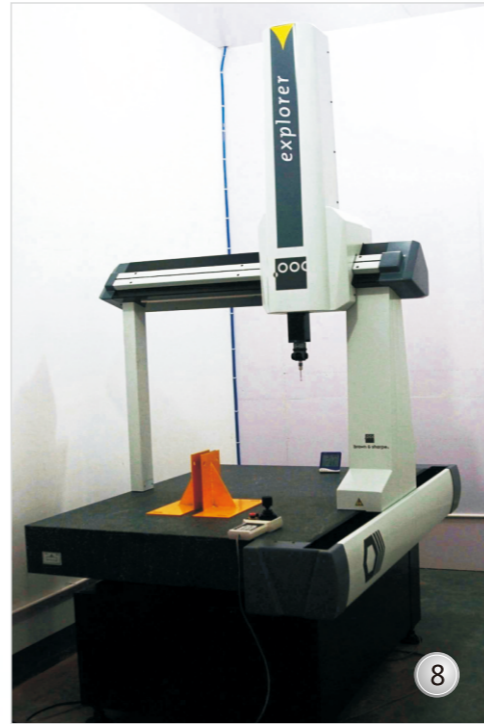
We have accomplished great achievements as we invested more resources and effort in new products, new crafts, new equipments and new management. Currently we own a large number of patents, and we have passed ISO9001:2000, CE, RoHS and CCC certification. Till now, we have been awarded with honorary titles such as the High-tech Enterprise and Famous Trademark.

As for business and market expansion, our products are being sold to more than 30 provinces and cities in China and more than 20 foreign countries in Europe, Africa, Southern America, the Middle East Southeast Asia etc.

We adhere to quality and innovation, and look forward to future cooperation with you.

airvent

公司设备 Facilities



- 1. High speed punching
- 2. Numerical control machining
- 3. Aerodynamic performance
- 4. Laser cutting
- 5. Noise test
- 6. Spray test
- 7. Spray test
- 8. Coordinate Measuring Machining
- 9. Motor testing system

- 1. 高速冲
- 2. 数控加工
- 3. 空气动力性能试验
- 4. 激光切割
- 5. 噪音测试室
- 6. 喷淋试验操作显示器
- 7. 喷淋试验室
- 8. 三坐标测量仪
- 9. 电机测试系统

外转子离心风机型号说明 产品简介

Product Introduction

一、介绍 (Introduce) :

1. 为了促进产品的节能、环保、高效等特点，EC系列风机是公司在多年生产AC系列风机的基础上，结合国内外先进技术，组织研发团队，全新研发的新一代产品。该产品大大提高了效率，完全具备节能、高效等优点，是空调、净化、冷冻等行业最理想的配套产品。

1. Emphasizing on energy saving, environmental protection, and high efficiency, our company absorbed advanced technology in home and abroad to research and develop a new generation of EC series Fan motors that was based on our years-long experience manufacturing traditional AC series Fan Motors. The new product has improved working efficiency greatly and is ideal for air-conditioning, purification, and refrigeration industries.

2. 风机的使用的环境温度范围为：-25°C~+60°C。

2. The ambient temperature of the fan motor is -25°C ~ +60°C.

二、型号说明 (Model specification) :

AV 1 EC 250 /072/13-1G B 045 E A

① ② ③ ④ ⑤ ⑥ ⑦ ⑧ ⑨ ⑩

① 电压编号/Voltage number

1: 100~130VAC 2: 200~277VAC 3: 24VDC 4: 48VDC

② EC:EC电机/EC Motor

DC: DC电机/DC Motor

③ 风机风轮直径/The diameter of fan blade

④ 转子外径/ Rotor Diameter in mm

⑤ 铁芯厚度/ Rotor thickness in mm

⑥ 单相电机/ Single Phase : 1G ⑧ 吹风/Blowing:B

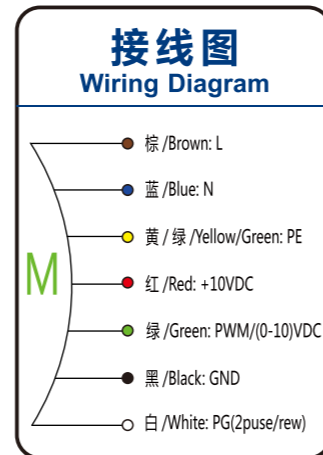
三相电机 Three Phase: 3G 吸风/Sucking : S

⑦ 叶轮厚度/ Impeller Diameter

⑨ 网罩/ Grid

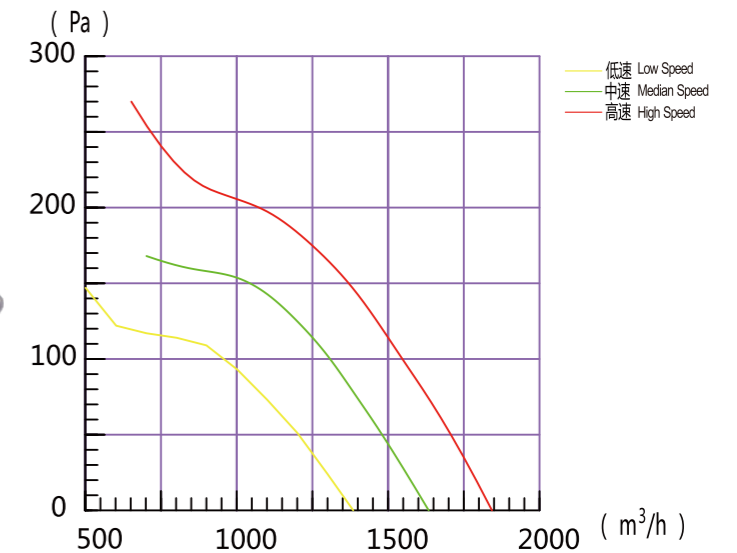
风筒/ Wind tunnel
方边框/square frame

⑩ 设计变更编码/Design change code



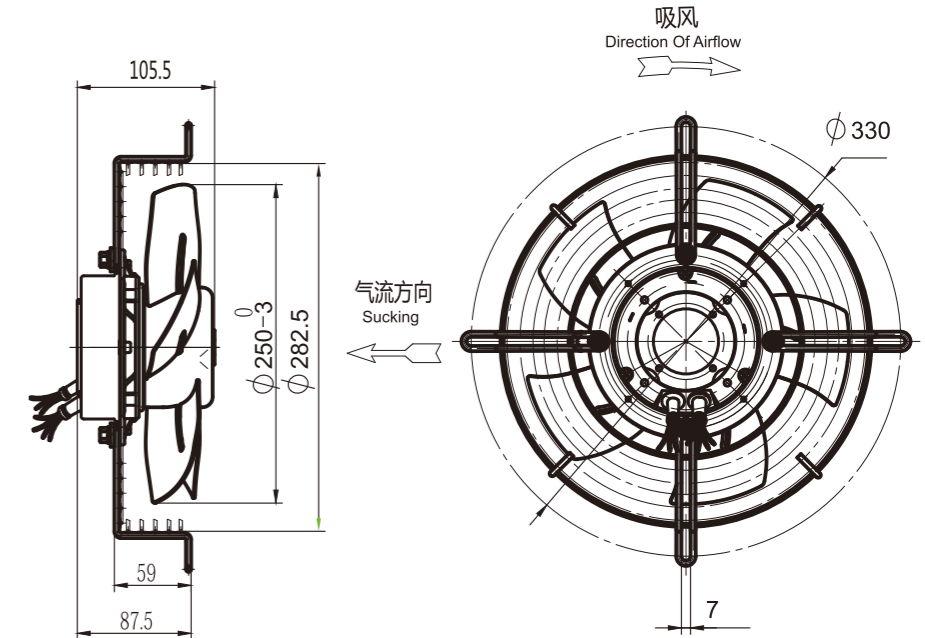
EC250 外转子轴流风机

EC External Rotor Axial Fan



产品特征 : Product Characteristic

- 旋转方向 Rotation : 顺时针 CW
- 防护等级 Type of Protection: IP54
- 绝缘等级 Insulation Class: F
- 连续工作制 Mode of Operation: S1
- 轴承 Bearings: 免维护深沟球轴承
Maintenance-free ball bearings
- 工作环境温度: -25 °C - +60 °C
Perm.amb.temp.: -25 °C - +60 °C
- 工作电压 : 200V - 277V/1P
Operating Voltage: 200V-277V/1P
- 调速方式 Std. Control : 0~10V or PWM

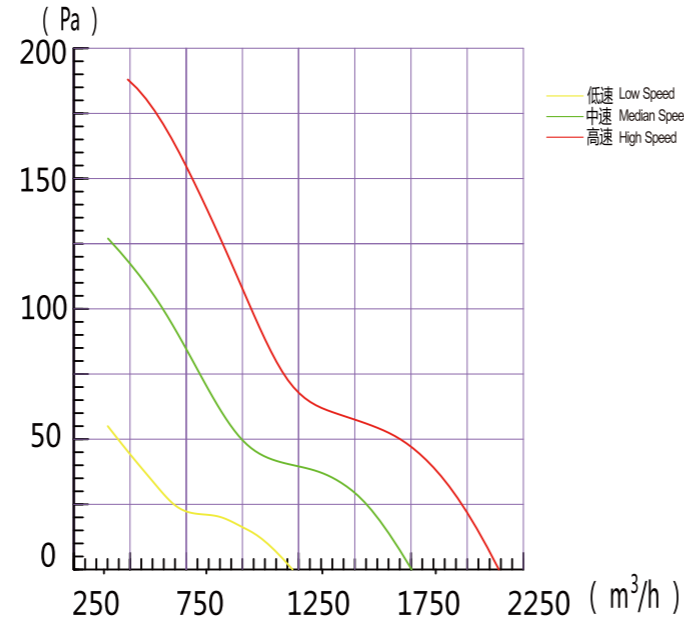


技术参数 Technical data

型号 Model	电压 voltage V	频率 Frequency Hz	电流 Current A	输入功率 Power Input W	转速 Speed r/min	最大风量 Air flow/max m³/h	许用静压 Max.static Pressure Pa	净重 N.W. Kg	噪音 Noise dB
AV2EC250/092/25-1GSE	220	50/60	1.09	174	2900	1840	180	2.5	70

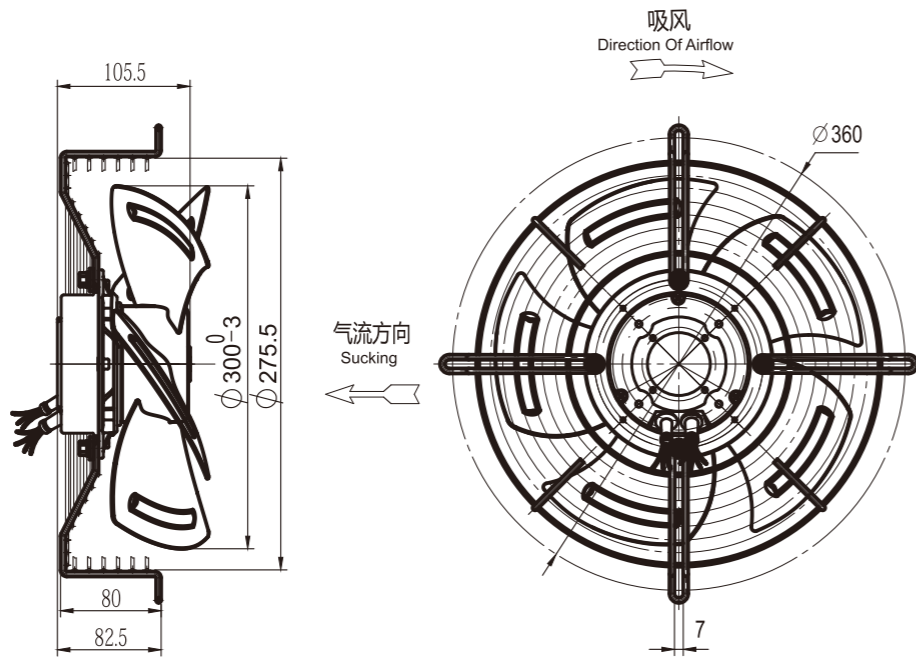
EC300 外转子轴流风机

EC External Rotor Axial Fan



产品特征:
Product Characteristic

- 旋转方向 Rotation: 顺时针 CW
- 防护等级 Type of Protection: IP54
- 绝缘等级 Insulation Class: F
- 连续工作制 Mode of Operation: S1
- 轴承 Bearings: 免维护深沟球轴承
Maintenance-free ball bearings
- 工作环境温度: -25 °C - +60 °C
Perm.amb.temp.: -25 °C - +60 °C
- 工作电压: 200V - 277V/1P
Operating Voltage: 200V-277V/1P
- 调速方式 Std. Control: 0~10V or PWM

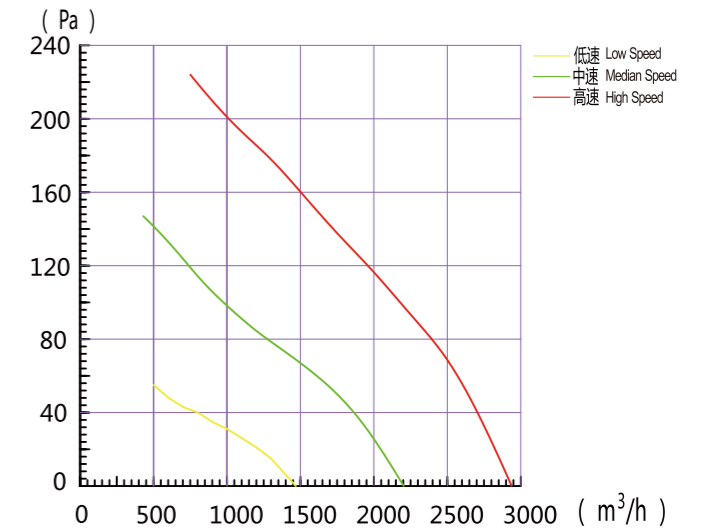


技术参数 Technical data

型号 Model	电压 voltage V	频率 Frequency Hz	电流 Current A	输入功率 Power Input W	转速 Speed r/min	最大风量 Air flow/max m³/h	许用静压 Max.static Pressure Pa	净重 N.W. Kg	噪音 Noise dB
AV2EC300/092/25-1GSE	220	50/60	0.83	127	1700	2140	110	2.8	72

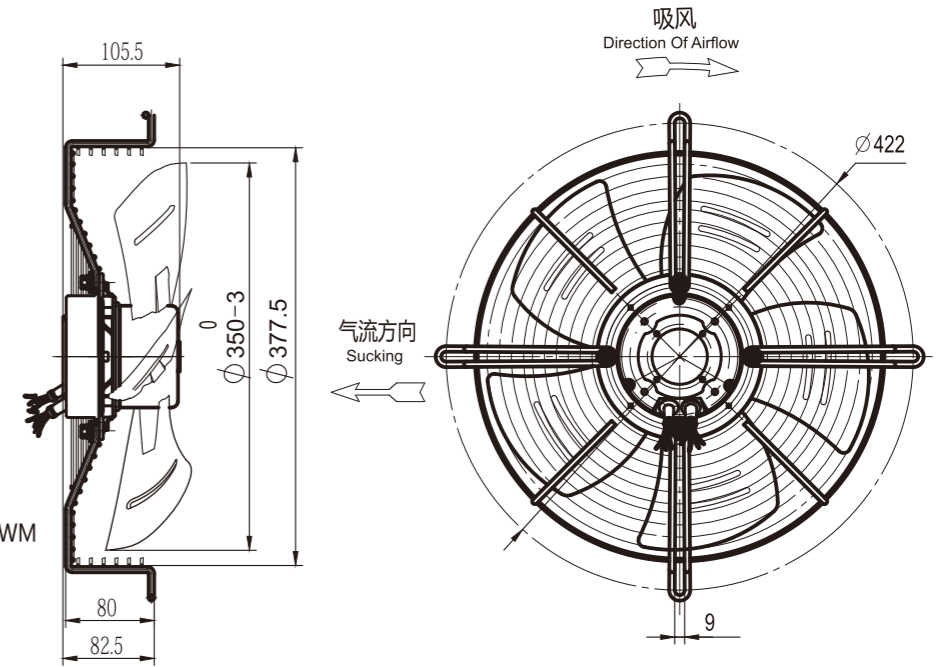
EC350 外转子轴流风机

EC External Rotor Axial Fan



产品特征:
Product Characteristic

- 旋转方向 Rotation: 顺时针 CW
- 防护等级 Type of Protection: IP54
- 绝缘等级 Insulation Class: F
- 连续工作制 Mode of Operation: S1
- 轴承 Bearings: 免维护深沟球轴承
Maintenance-free ball bearings
- 工作环境温度: -25 °C - +60 °C
Perm.amb.temp.: -25 °C - +60 °C
- 工作电压: 200V - 277V/1P
Operating Voltage: 200V-277V/1P
- 调速方式 Std. Control: 0~10V or PWM

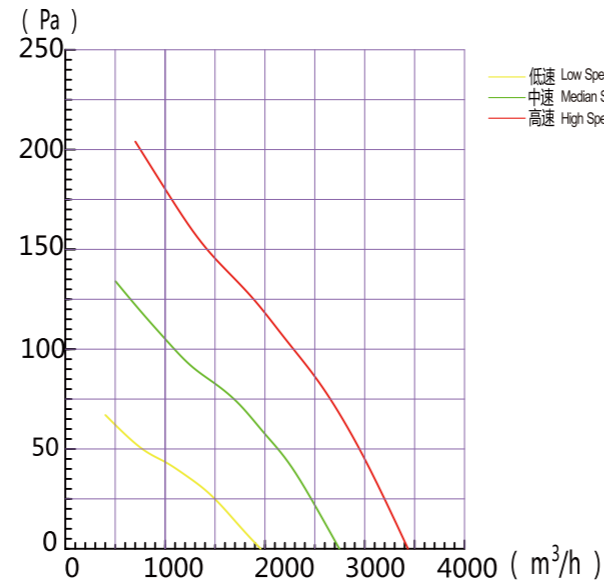


技术参数 Technical data

型号 Model	电压 voltage V	频率 Frequency Hz	电流 Current A	输入功率 Power Input W	转速 Speed r/min	最大风量 Air flow/max m³/h	许用静压 Max.static Pressure Pa	净重 N.W. Kg	噪音 Noise dB
AV2EC350/092/25-1GSE	220	50/60	1.17	184	1630	2930	100	3.2	65

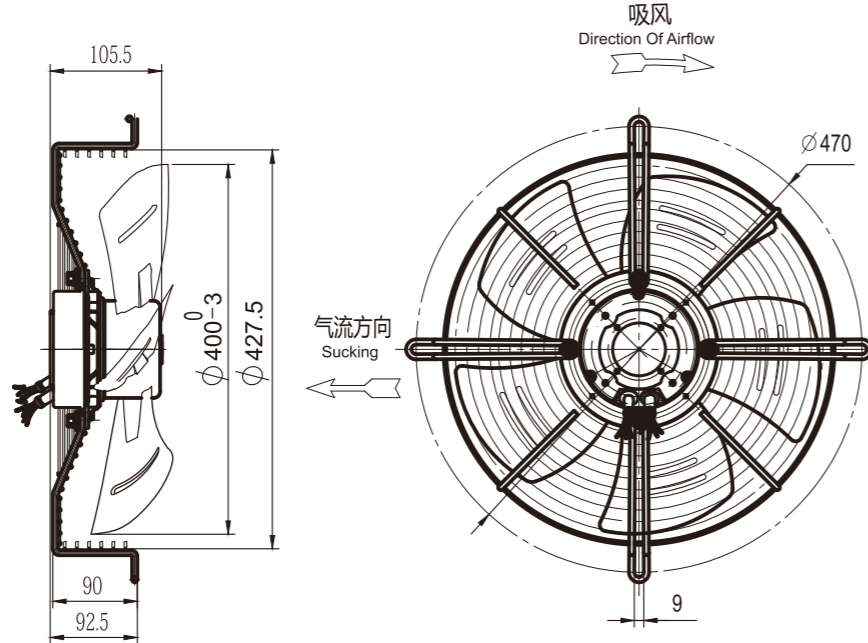
EC400 外转子轴流风机

EC External Rotor Axial Fan



产品特征: Product Characteristic

- 旋转方向 Rotation: 顺时针 CW
- 防护等级 Type of Protection: IP54
- 绝缘等级 Insulation Class: F
- 连续工作制 Mode of Operation: S1
- 轴承 Bearings: 免维护深沟球轴承 Maintenance-free ball bearings
- 工作环境温度: -25 °C - +60 °C Perm.amb.temp.: -25 °C - +60 °C
- 工作电压: 200V - 277V/1P Operating Voltage: 200V-277V/1P
- 调速方式 Std. Control: 0~10V or PWM

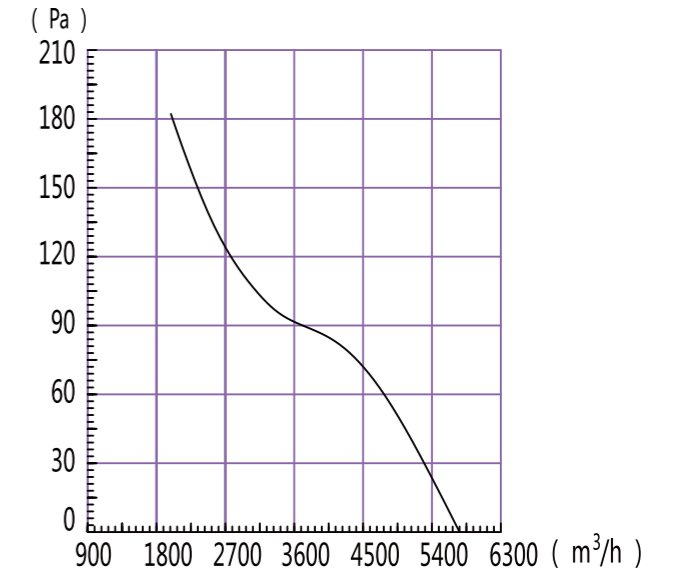


技术参数 Technical data

型号 Model	电压 voltage V	频率 Frequency Hz	电流 Current A	输入功率 Power Input W	转速 Speed r/min	最大风量 Air flow/max m³/h	许用静压 Max.static Pressure Pa	净重 N.W. Kg	噪音 Noise dB
AV2EC400/092/25-1GSE	220	50/60	1.13	178	1375	3430	90	3.7	65
AV2EC400/102/50-1GSE	220	50/60	2.4	480	1800	4800	110	5.2	80

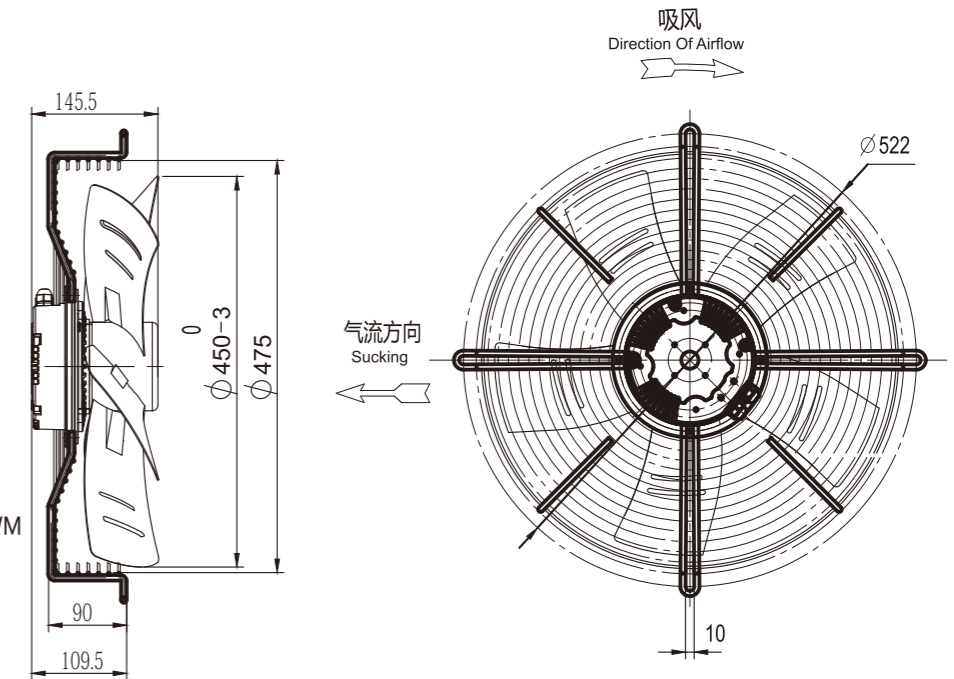
EC450 外转子轴流风机

EC External Rotor Axial Fan



产品特征: Product Characteristic

- 旋转方向 Rotation: 顺时针 CW
- 防护等级 Type of Protection: IP54
- 绝缘等级 Insulation Class: F
- 连续工作制 Mode of Operation: S1
- 轴承 Bearings: 免维护深沟球轴承 Maintenance-free ball bearings
- 工作环境温度: -25 °C - +60 °C Perm.amb.temp.: -25 °C - +60 °C
- 工作电压: 200V - 277V/1P Operating Voltage: 200V-277V/1P
- 调速方式 Std. Control: 0~10V or PWM

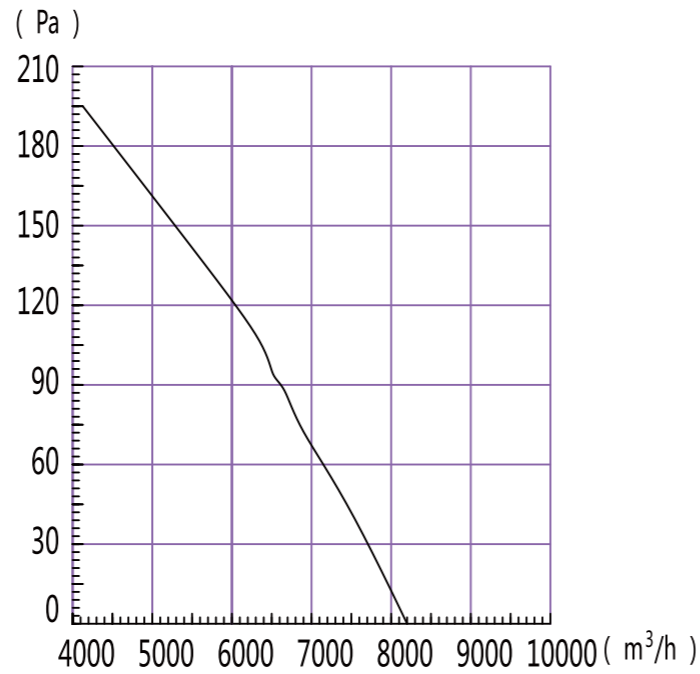


技术参数 Technical data

型号 Model	电压 voltage V	频率 Frequency Hz	电流 Current A	输入功率 Power Input W	转速 Speed r/min	最大风量 Air flow/max m³/h	许用静压 Max.static Pressure Pa	净重 N.W. Kg	噪音 Noise dB
AV2EC450/102/50-1GSE	220	50/60	2.33	190	1345	5686	100	6.8	70

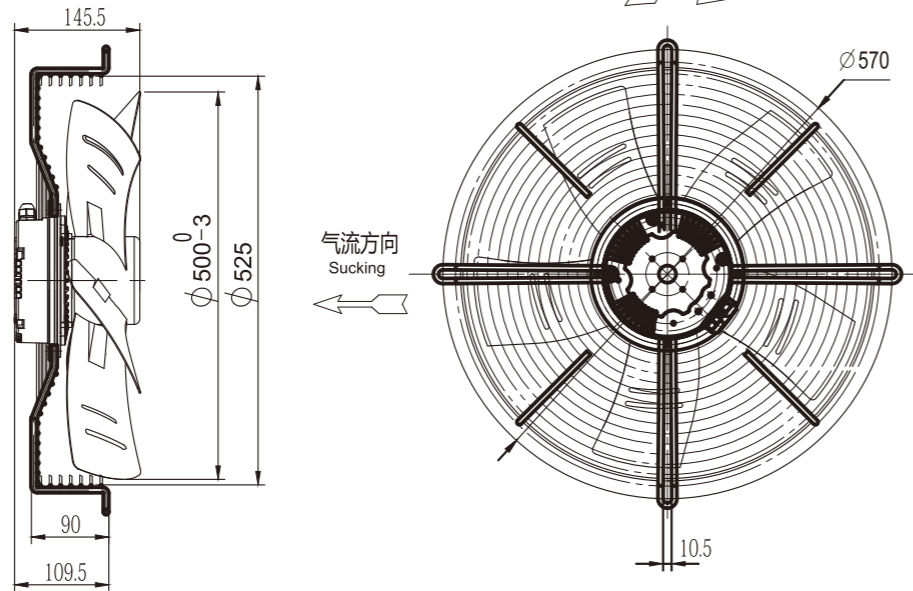
EC500 外转子轴流风机

EC External Rotor Axial Fan



产品特点: Product Characteristic

- 旋转方向 Rotation: 顺时针 CW
- 防护等级 Type of Protection: IP54
- 绝缘等级 Insulation Class: F
- 连续工作制 Mode of Operation: S1
- 轴承 Bearings: 免维护深沟球轴承 Maintenance-free ball bearings
- 工作环境温度: -25 °C - +60 °C Perm.amb.temp.: -25 °C - +60 °C
- 工作电压: 200V - 277V/1P Operating Voltage: 200V-277V/1P
- 调速方式 Std. Control: 0~10V or PWM

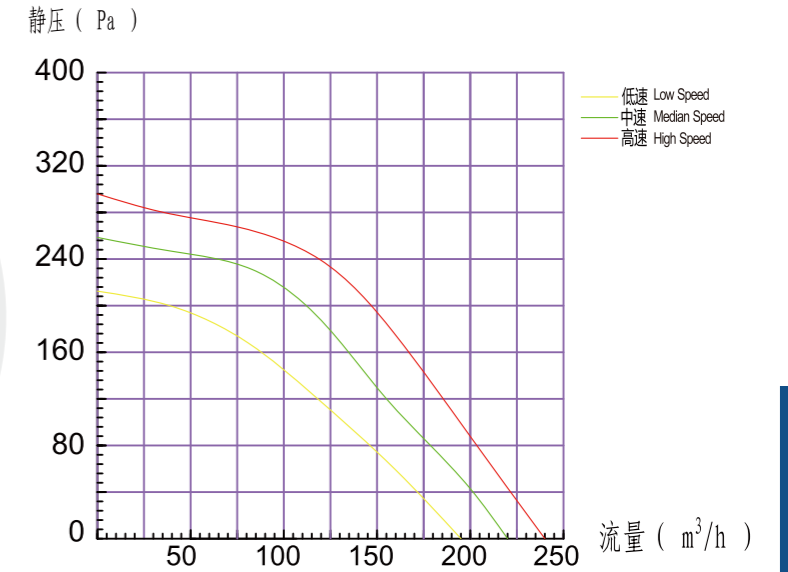


技术参数 Technical data

型号 Model	电压 voltage V	频率 Frequency Hz	电流 Current A	输入功率 Power Input W	转速 Speed r/min	最大风量 Air flow/max m³/h	许用静压 Max.static Pressure Pa	净重 N.W. Kg	噪音 Noise dB
AV2EC500/102/50-1GSE	220	50/60	0.77	471	1370	8000	150	15	73

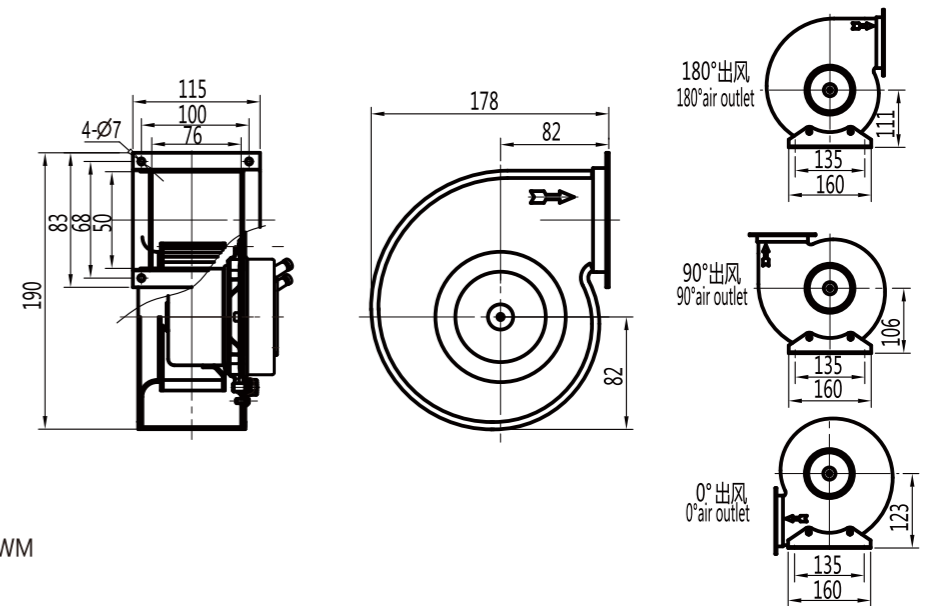
EC/DC120 单进风离心风机

EC/DC Single-Inlet Centrifugal Fan



产品特点: Product Characteristic

- 旋转方向 Rotation: 顺时针 CW
- 防护等级 Type of Protection: IP54
- 绝缘等级 Insulation Class: F
- 连续工作制 Mode of Operation: S1
- 轴承 Bearings: 免维护深沟球轴承 Maintenance-free ball bearings
- 工作环境温度: -25 °C - +60 °C Perm.amb.temp.: -25 °C - +60 °C
- 工作电压: 200V - 277V/1P Operating Voltage: 200V-277V/1P
- 调速方式 Std. Control: 0~10V or PWM



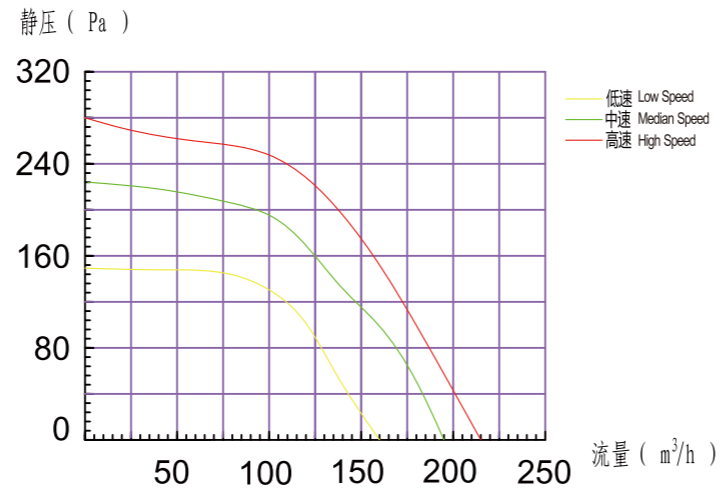
技术参数 Technical data

型号 Model	电压 Voltage V	工作电压 Operating Voltage V	频率 Frequency Hz	电流 Current A	输入功率 Power Input W	转速 Speed r/min	最大风量 Air flow/max m³/h	许用静压 Max.static Pressure Pa	净重 N.W. Kg	噪音 Noise dB
AV2EC120/072/13-1G	230	AC200-277	50/60	0.3	41	2200	240	-	1.8	62
AV3DC120/072/13	24	DC16-28	-	1.9	40	2200	240	-	2.3	62
AV4DC120/072/13	48	DC36-57	-	0.95	40	2200	240	-	2.3	62

airvent

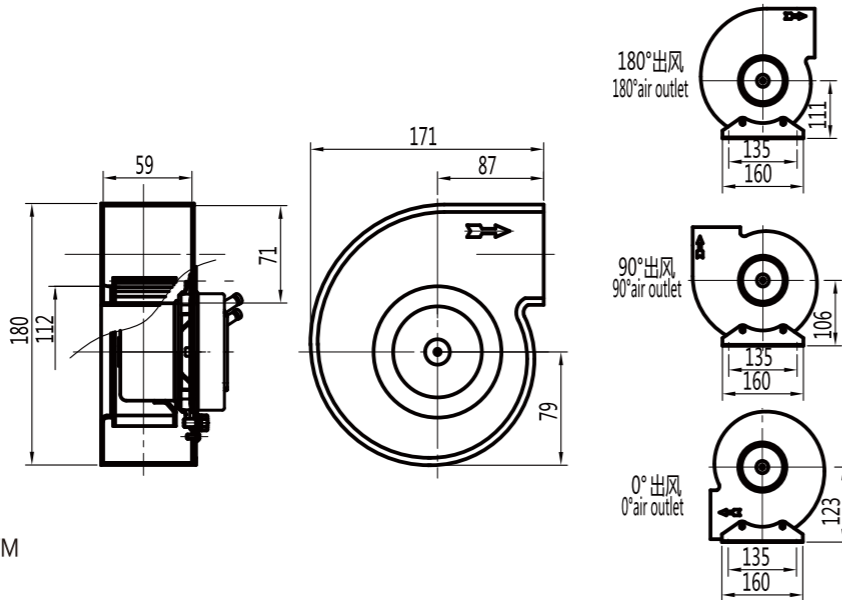
EC/DC133 单进风离心风机

EC/DC Single-Inlet Centrifugal Fan



产品特点：
Product Characteristic

- 旋转方向 Rotation：顺时针 CW
- 防护等级 Type of Protection: IP54
- 绝缘等级 Insulation Class: F
- 连续工作制 Mode of Operation: S1
- 轴承 Bearings: 免维护深沟球轴承
Maintenance-free ball bearings
- 工作环境温度：-25 °C - +60 °C
Perm.amb.temp.: -25 °C - +60 °C
- 工作电压：200V - 277V/1P
Operating Voltage: 200V-277V/1P
- 调速方式 Std. Control：0~10V or PWM



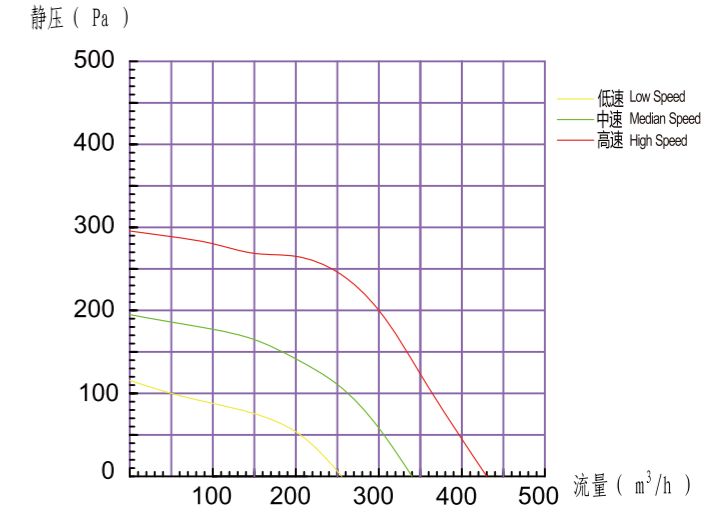
技术参数 Technical data

型号 Model	电压 Voltage V	工作电压 Operating Voltage V	频率 Frequency Hz	电流 Current A	输入功率 Power Input W	转速 Speed r/min	最大风量 Air flow/max m ³ /h	许用静压 Max.static Pressure Pa	净重 N.W. Kg	噪音 Noise dB
AV2EC133/072/13-1G	230	AC200-277	50/60	0.3	38	1925	215	-	1.5	63
AV3DC133/072/13	24	DC16-28	-	2.2	40	1925	215	-	1.3	64
AV4DC133/072/13	48	DC36-57	-	1.1	45	1925	215	-	1.3	62

airvent

EC/DC140 单进风离心风机

EC/DC Single-Inlet Centrifugal Fan



产品特点：
Product Characteristic

- 旋转方向 Rotation：顺时针 CW
- 防护等级 Type of Protection: IP54
- 绝缘等级 Insulation Class: F
- 连续工作制 Mode of Operation: S1
- 轴承 Bearings: 免维护深沟球轴承
Maintenance-free ball bearings
- 工作环境温度：-25 °C - +60 °C
Perm.amb.temp.: -25 °C - +60 °C
- 工作电压：200V - 277V/1P
Operating Voltage: 200V-277V/1P
- 调速方式 Std. Control：0~10V or PWM

技术参数 Technical data

型号 Model	电压 Voltage V	频率 Frequency Hz	电流 Current A	输入功率 Power Input W	转速 Speed r/min	最大风量 Air flow/max m ³ /h	许用静压 Max.static Pressure Pa	净重 N.W. Kg	噪音 Noise dB
AV2EC140/092/25-1G	230	50/60	1.2	170	2770	425	-	3.2	63
AV2EC140/072/13-1G	220	50/60	0.5	66	1800	430	-	2.6	63
AV3DC140/072/13	24	-	2.5	54	1800	430	-	2.3	63
AV4DC140/072/13	48	-	1.3	54	1800	430	-	2.3	63

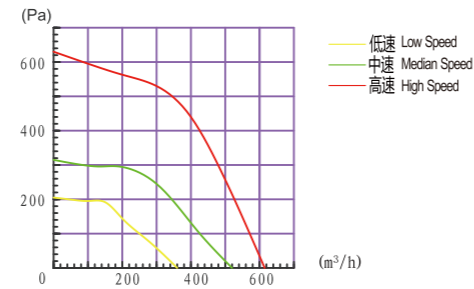
airvent

EC/DC146 单进风离心风机

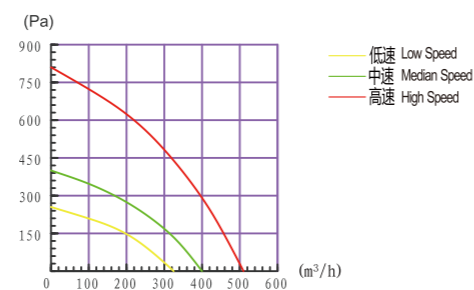
EC/DC Single-Inlet Centrifugal Fan



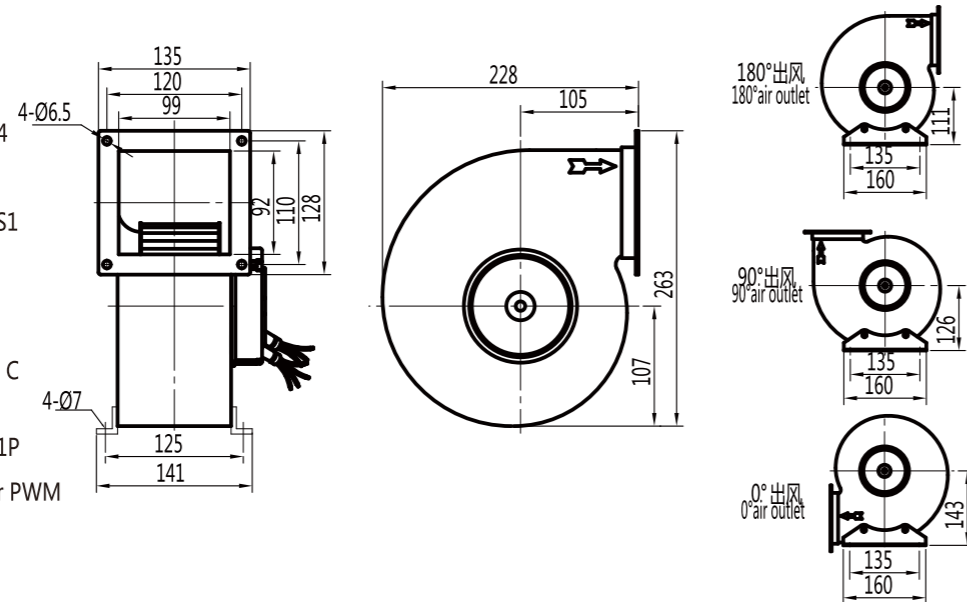
EC流量-静压曲线(Volume-static pressure curve)



DC流量-静压曲线(Volume-static pressure curve)


产品特征:
Product Characteristic

- 旋转方向 Rotation: 顺时针 CW
- 防护等级 Type of Protection: IP54
- 绝缘等级 Insulation Class: F
- 连续工作制 Mode of Operation: S1
- 轴承 Bearings: 免维护深沟球轴承
Maintenance-free ball bearings
- 工作环境温度: -25 °C - +60 °C
Perm.amb.temp.: -25 °C - +60 °C
- 工作电压: 200V - 277V/1P
Operating Voltage: 200V-277V/1P
- 调速方式 Std. Control: 0~10V or PWM


技术参数 Technical data

型号 Model	电压 Voltage V	工作电压 Operating Voltage V	频率 Frequency Hz	电流 Current A	输入功率 Power Input W	转速 Speed r/min	最大风量 Air flow/max m³/h	许用静压 Max.static Pressure Pa	净重 N.W. Kg	噪音 Noise dB
AV2EC146/092/25-1G	230	AC200-277	50/60	1.34	178	2520	620	-	3.6	72
AV3DC146/092/25	24	DC16-28	-	5.0	100	2200	470	-	3.0	68
AV4DC146/092/25	48	DC36-57	-	2.6	100	2150	465	-	3.0	67

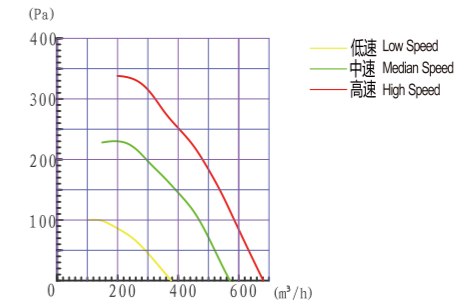
airvent

EC/DC160 单进风离心风机

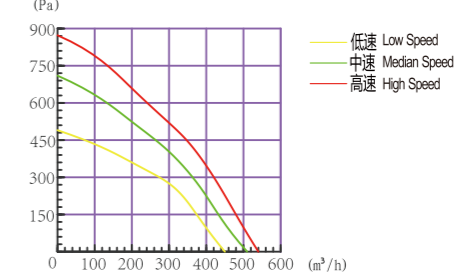
EC/DC Single-Inlet Centrifugal Fan



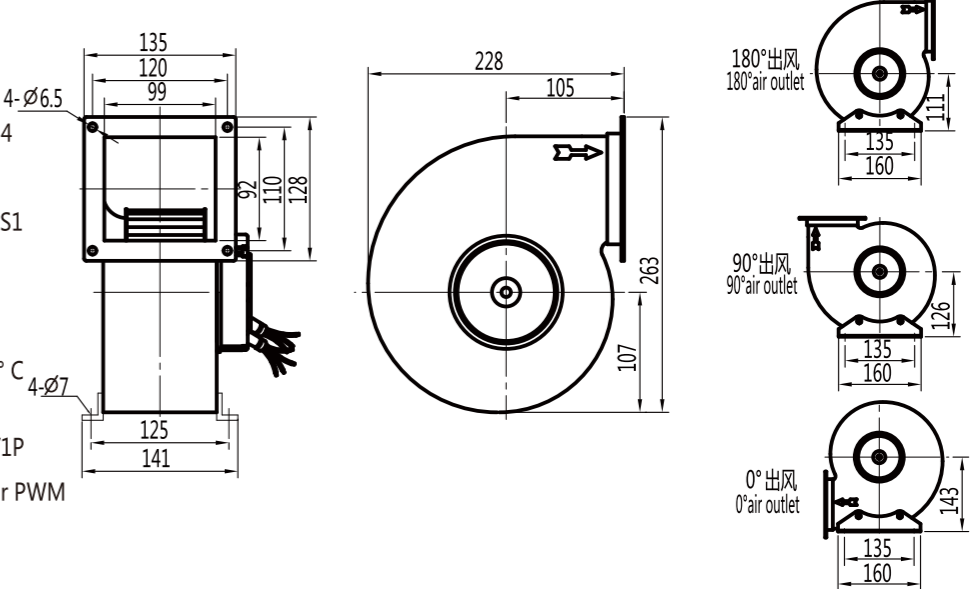
EC流量-静压曲线(Volume-static pressure curve)



DC流量-静压曲线(Volume-static pressure curve)


产品特征:
Product Characteristic

- 旋转方向 Rotation: 顺时针 CW
- 防护等级 Type of Protection: IP54
- 绝缘等级 Insulation Class: F
- 连续工作制 Mode of Operation: S1
- 轴承 Bearings: 免维护深沟球轴承
Maintenance-free ball bearings
- 工作环境温度: -25 °C - +60 °C
Perm.amb.temp.: -25 °C - +60 °C
- 工作电压: 200V - 277V/1P
Operating Voltage: 200V-277V/1P
- 调速方式 Std. Control: 0~10V or PWM

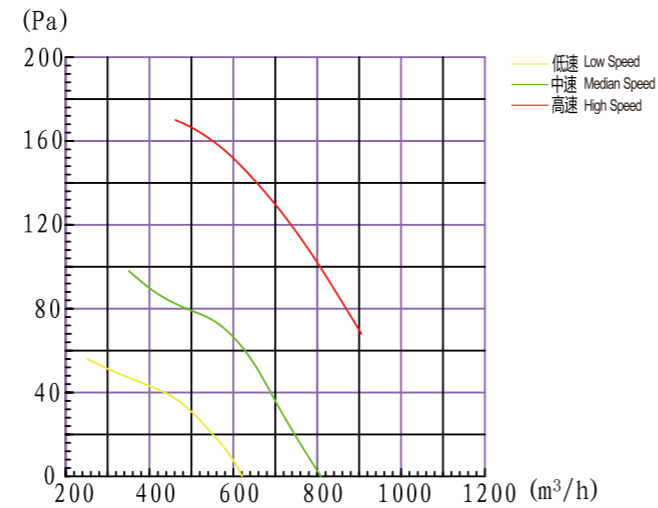

技术参数 Technical data

型号 Model	电压 Voltage V	工作电压 Operating Voltage V	频率 Frequency Hz	电流 Current A	输入功率 Power Input W	转速 Speed r/min	最大风量 Air flow/max m³/h	许用静压 Max.static Pressure Pa	净重 N.W. Kg	噪音 Noise dB
AV2EC160/092/25-1G	AC230	AC200-277	50/60	1.35	180	2150	680	-	3.8	74
AV3DC160/092/25	DC24	DC16-28	-	5.8	105	1750	505	-	3.0	67
AV4DC160/092/25	DC48	DC36-57	-	2.9	105	1750	505	-	3.0	67

airvent

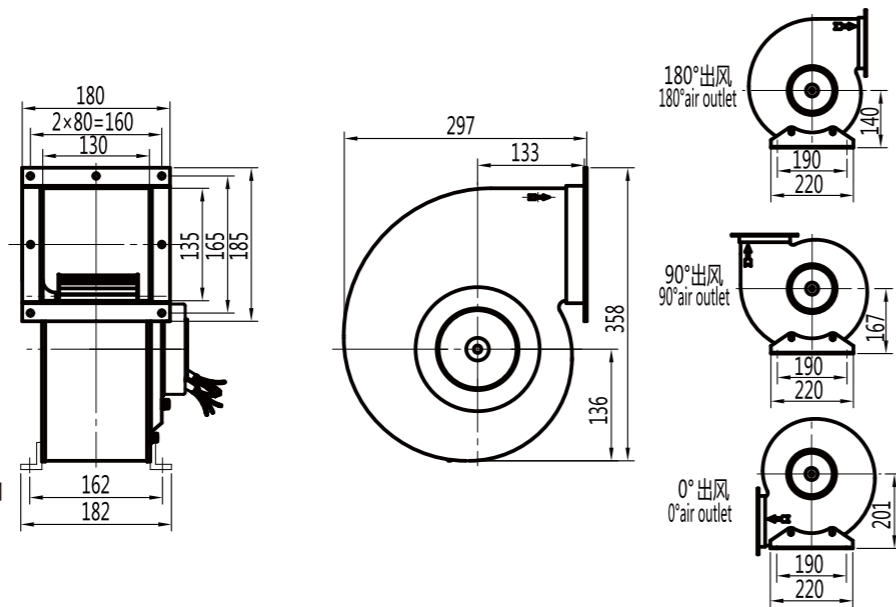
EC180 单进风离心风机

EC Single-Inlet Centrifugal Fan



产品特点 Product Characteristic

- 旋转方向 Rotation: 顺时针 CW
- 防护等级 Type of Protection: IP54
- 绝缘等级 Insulation Class: F
- 连续工作制 Mode of Operation: S1
- 轴承 Bearings: 免维护深沟球轴承 Maintenance-free ball bearings
- 工作环境温度: -25 °C - +60 °C Perm.amb.temp.: -25 °C - +60 °C
- 工作电压: 200V - 277V/1P Operating Voltage: 200V-277V/1P
- 调速方式 Std. Control: 0~10V or PWM



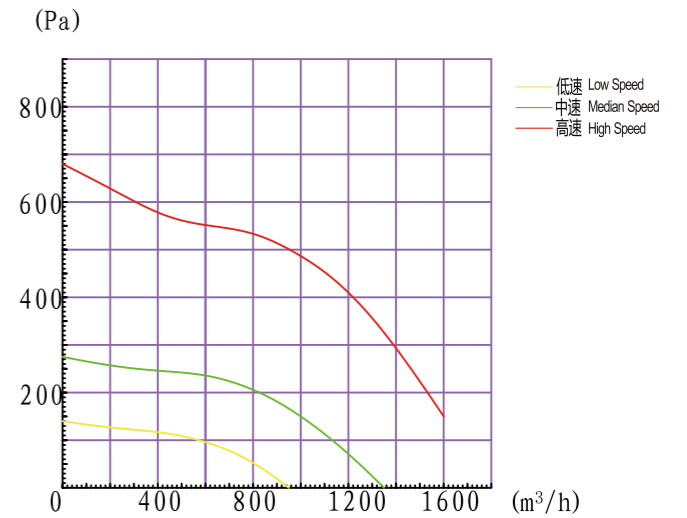
技术参数 Technical data

型号 Model	电压 Voltage V	工作电压 Operating Voltage V	频率 Frequency Hz	电流 Current A	输入功率 Power Input W	转速 Speed r/min	最大风量 Air flow/max m³/h	许用静压 Max.static Pressure Pa	净重 N.W. Kg	噪音 Noise dB
AV2EC180/092/25-1G	230	AC200-277	50/60	1.03	159	1330	900	70	4.0	72

airvent

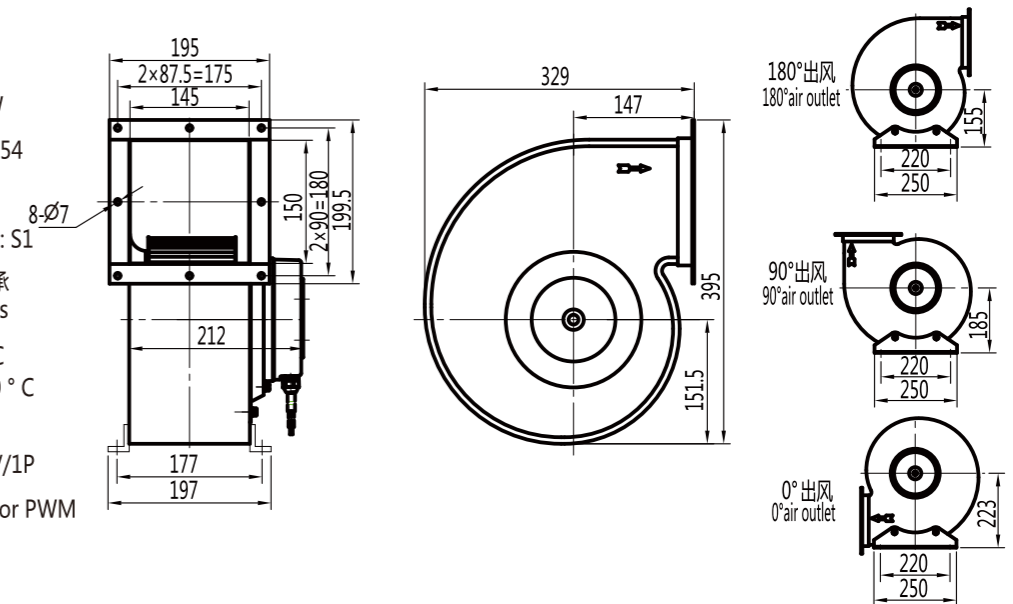
EC200 单进风离心风机

EC Single-Inlet Centrifugal Fan



产品特点 Product Characteristic

- 旋转方向 Rotation: 顺时针 CW
- 防护等级 Type of Protection: IP54
- 绝缘等级 Insulation Class: F
- 连续工作制 Mode of Operation: S1
- 轴承 Bearings: 免维护深沟球轴承 Maintenance-free ball bearings
- 工作环境温度: -25 °C - +60 °C Perm.amb.temp.: -25 °C - +60 °C
- 工作电压: 200V - 277V/1P Operating Voltage: 200V-277V/1P
- 调速方式 Std. Control: 0~10V or PWM



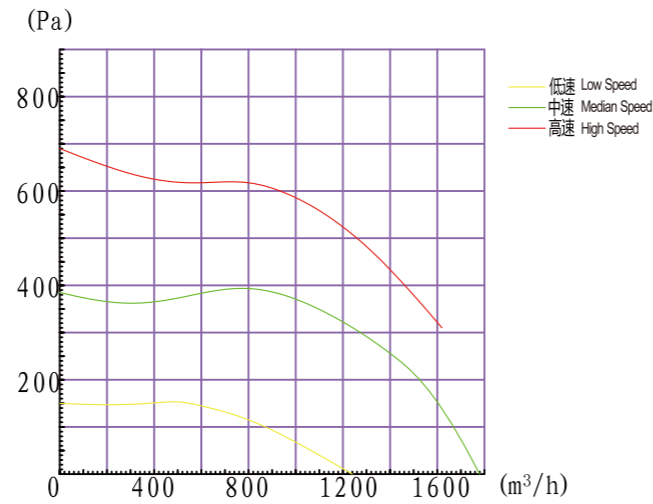
技术参数 Technical data

型号 Model	电压 voltage V	工作电压 operating voltage V	频率 Frequency Hz	电流 Current A	输入功率 Power Input W	转速 Speed r/min	最大风量 Air flow/max m³/h	许用静压 Max.static Pressure Pa	净重 N.W. Kg	噪音 Noise dB
AV2EC200/092/25-1G	230	200-277	50/60	3.1	510	1890	1590	150	7.2	73

airvent

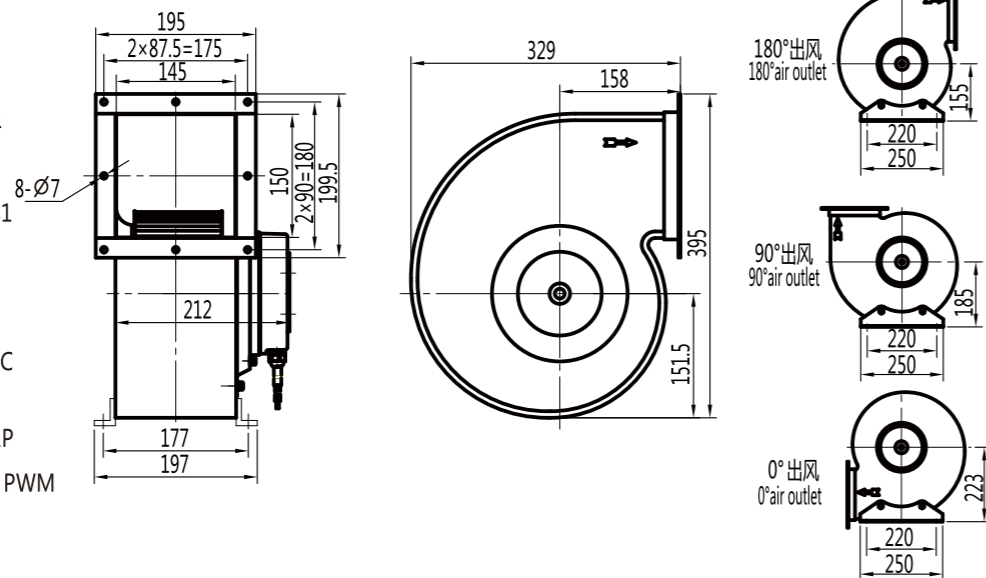
EC225 单进风离心风机

EC Single-Inlet Centrifugal Fan



产品特点: Product Characteristic

- 旋转方向 Rotation: 顺时针 CW
- 防护等级 Type of Protection: IP54
- 绝缘等级 Insulation Class: F
- 连续工作制 Mode of Operation: S1
- 轴承 Bearings: 免维护深沟球轴承
Maintenance-free ball bearings
- 工作环境温度: -25 °C - +60 °C
Perm.amb.temp.: -25 °C - +60 °C
- 工作电压: 200V - 277V/1P
Operating Voltage: 200V-277V/1P
- 调速方式 Std. Control: 0~10V or PWM



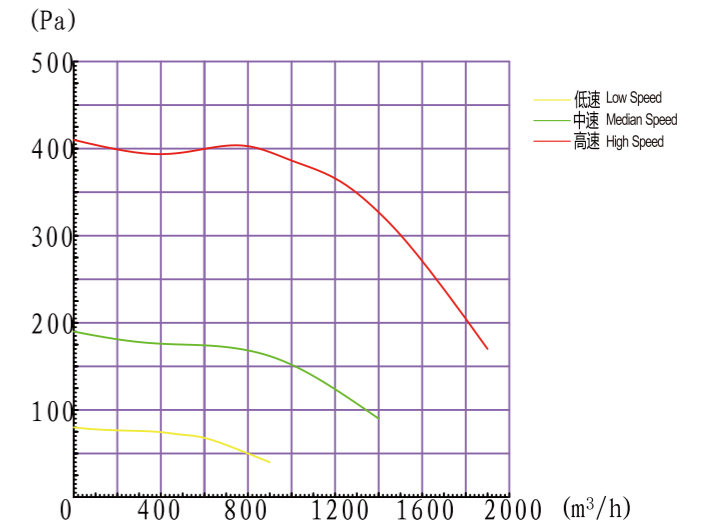
技术参数 Technical data

型号 Model	电压 voltage V	工作电压 operating voltage V	频率 Frequency Hz	电流 Current A	输入功率 Power Input W	转速 Speed r/min	最大风量 Air flow/max m³/h	许用静压 Max.static Pressure Pa	净重 N.W. Kg	噪音 Noise dB
AV2EC225/092/25-1G	230	200-277	50/60	3.5	545	1815	1600	300	10.3	77

airvent

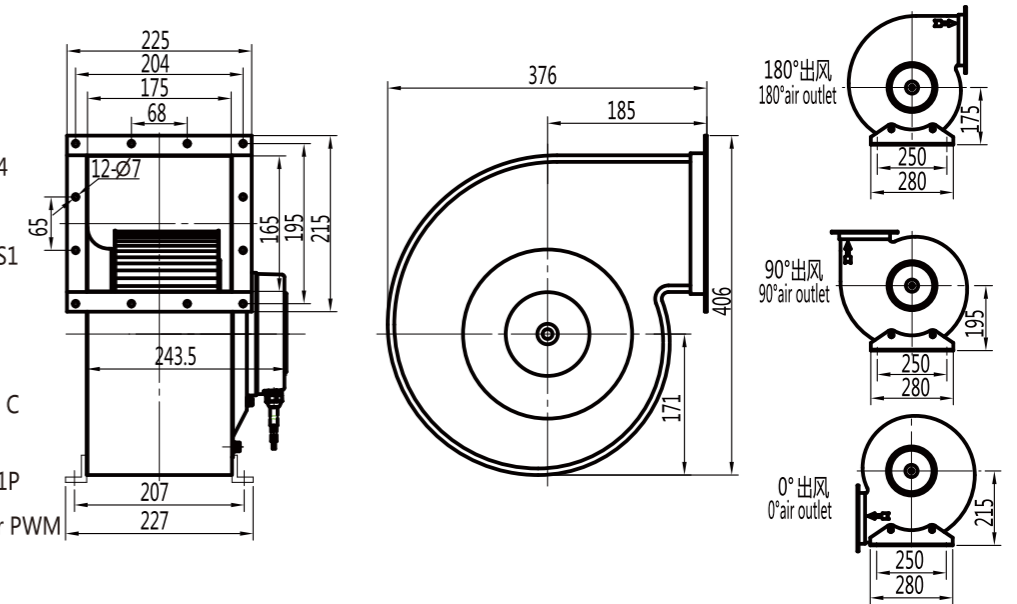
EC250 单进风离心风机

EC Single-Inlet Centrifugal Fan



产品特点: Product Characteristic

- 旋转方向 Rotation: 顺时针 CW
- 防护等级 Type of Protection: IP54
- 绝缘等级 Insulation Class: F
- 连续工作制 Mode of Operation: S1
- 轴承 Bearings: 免维护深沟球轴承
Maintenance-free ball bearings
- 工作环境温度: -25 °C - +60 °C
Perm.amb.temp.: -25 °C - +60 °C
- 工作电压: 200V - 277V/1P
Operating Voltage: 200V-277V/1P
- 调速方式 Std. Control: 0~10V or PWM



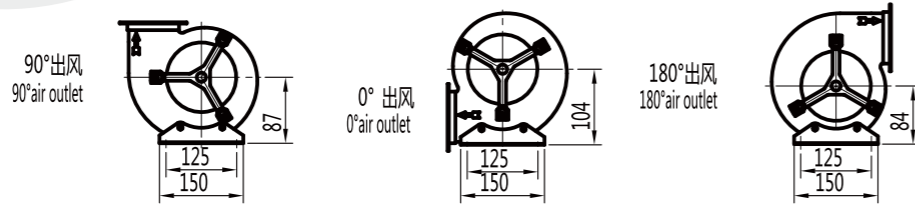
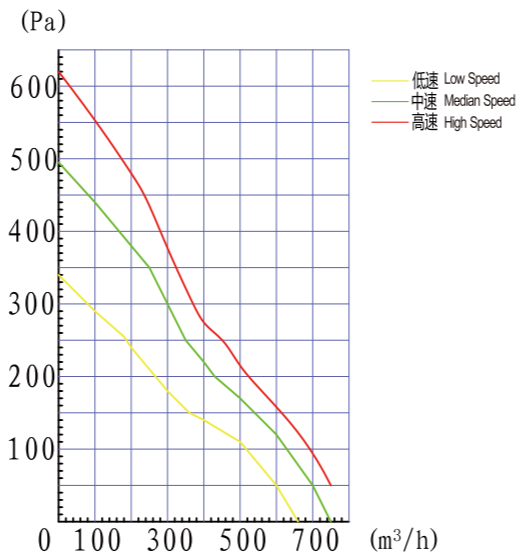
技术参数 Technical data

型号 Model	电压 voltage V	工作电压 operating voltage V	频率 Frequency Hz	电流 Current A	输入功率 Power Input W	转速 Speed r/min	最大风量 Air flow/max m³/h	许用静压 Max.static Pressure Pa	净重 N.W. Kg	噪音 Noise dB
AV2EC250/092/25-1G	230	200-277	50/60	2.9	450	1230	1900	180	14	78

airvent

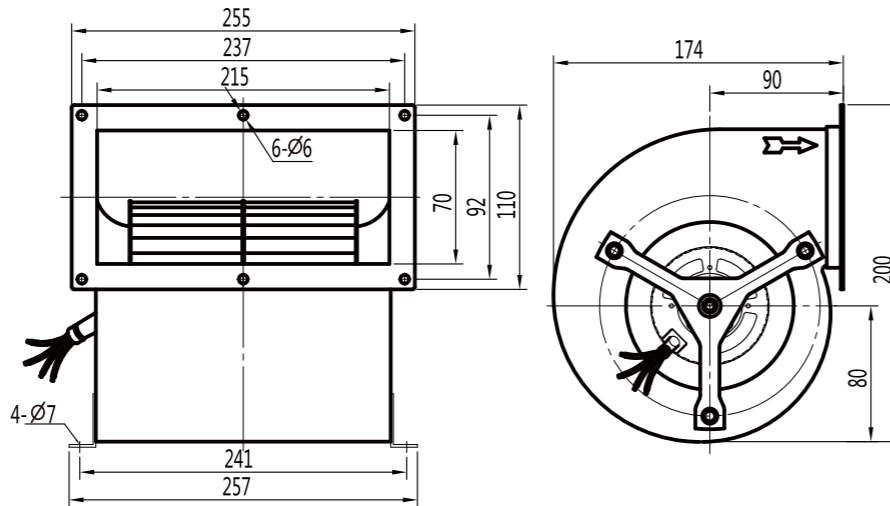
DC133 双进风离心风机

DC Double -inlet Centrifugal Fan



产品特征: Product Characteristic

- 旋转方向 Rotation: 顺时针 CW
- 防护等级 Type of Protection: IP54
- 绝缘等级 Insulation Class: F
- 连续工作制 Mode of Operation: S1
- 轴承 Bearings: 免维护深沟球轴承 Maintenance-free ball bearings
- 工作环境温度: -25 °C - +60 °C Perm.amb.temp.: -25 °C - +60 °C
- 工作电压: 200V - 277V/1P Operating Voltage: 200V-277V/1P
- 调速方式 Std. Control: 0~10V or PWM



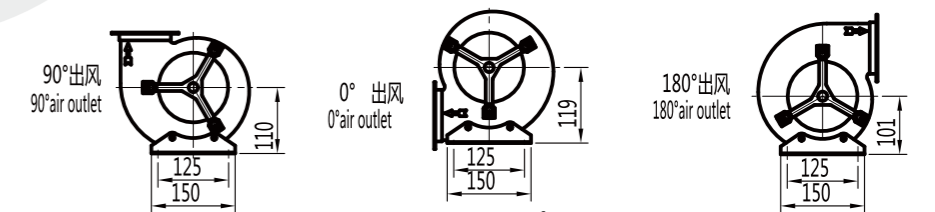
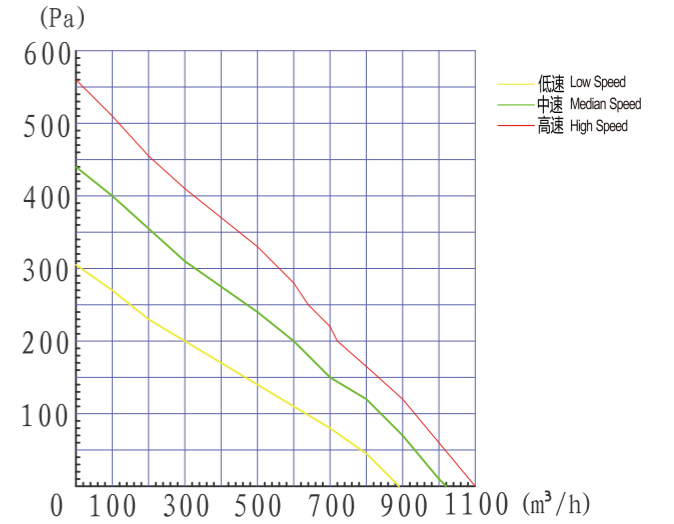
技术参数 Technical data

型号 Model	电压 voltage V	工作电压 operating voltage V	电流 Current A	输入功率 Power Input W	转速 Speed r/min	最大风量 Air flow/max m³/h	许用静压 Max.static Pressure Pa	净重 N.W. Kg	噪音 Noise dB
AV3DC133A/072/25	24	16-28	5.6	105	1780	750	50	3.7	62
AV4DC133A/072/25	48	36-57	2.8	105	1780	750	50	3.7	62

airvent

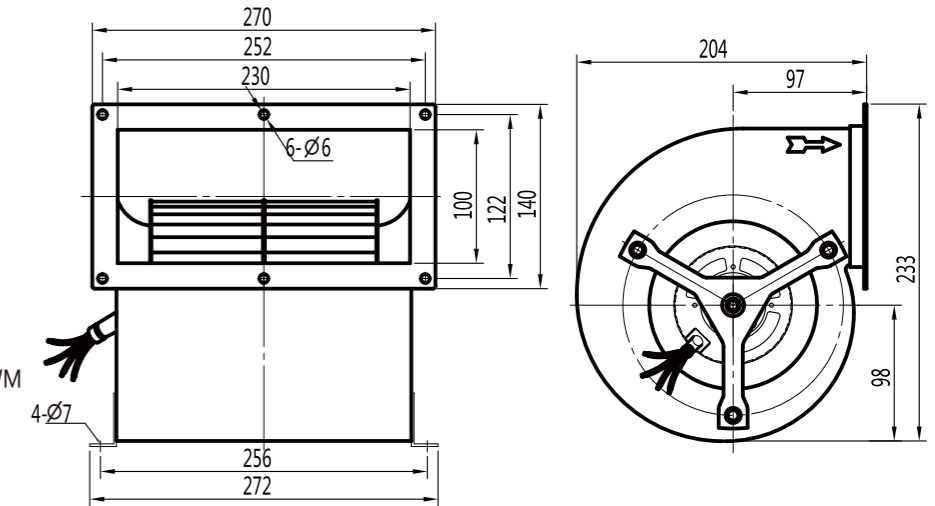
DC133 双进风离心风机

DC Double -inlet Centrifugal Fan



产品特征: Product Characteristic

- 旋转方向 Rotation: 顺时针 CW
- 防护等级 Type of Protection: IP54
- 绝缘等级 Insulation Class: F
- 连续工作制 Mode of Operation: S1
- 轴承 Bearings: 免维护深沟球轴承 Maintenance-free ball bearings
- 工作环境温度: -25 °C - +60 °C Perm.amb.temp.: -25 °C - +60 °C
- 工作电压: 200V - 277V/1P Operating Voltage: 200V-277V/1P
- 调速方式 Std. Control: 0~10V or PWM



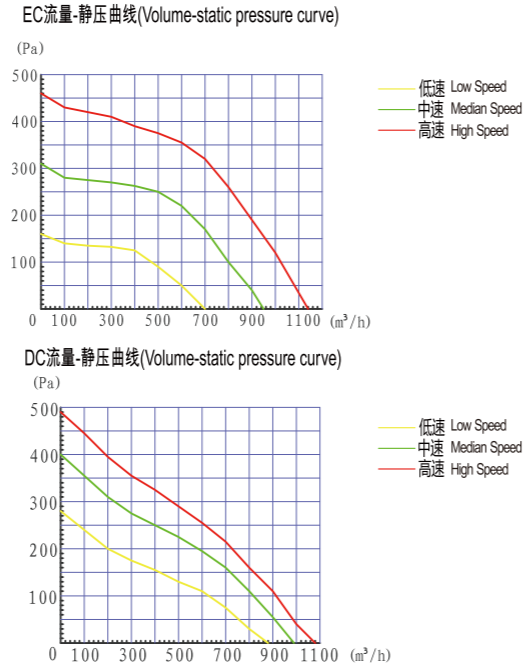
技术参数 Technical data

型号 Model	电压 voltage V	工作电压 operating voltage V	电流 Current A	输入功率 Power Input W	转速 Speed r/min	最大风量 Air flow/max m³/h	许用静压 Max.static Pressure Pa	净重 N.W. Kg	噪音 Noise dB
AV3DC133B/072/25	24	16-28	6.0	118	1580	1080	0	4.5	64
AV4DC133B/072/25	48	36-57	3.0	118	1580	1080	0	4.5	64

airvent

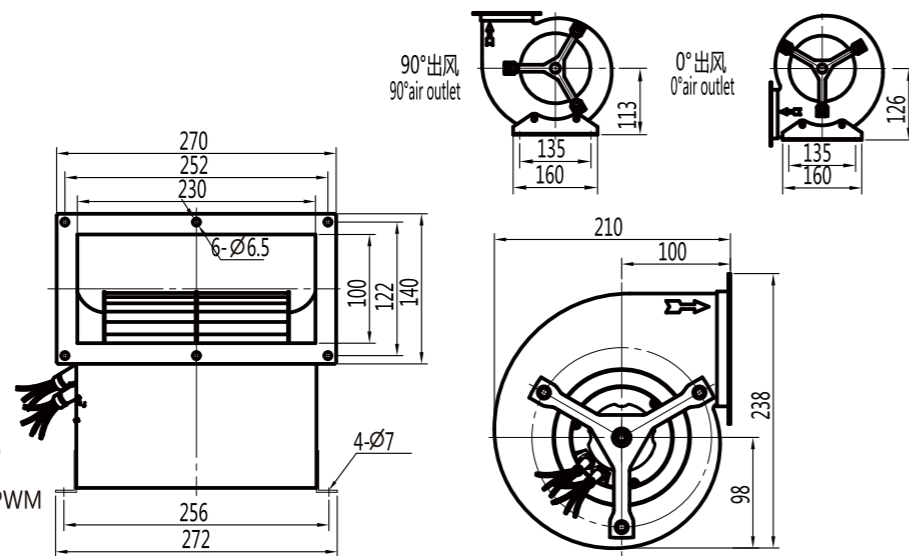
EC/DC146 双进风离心风机

EC/DC Double -inlet Centrifugal Fan



产品特征: Product Characteristic

- 旋转方向 Rotation: 顺时针 CW
- 防护等级 Type of Protection: IP54
- 绝缘等级 Insulation Class: F
- 连续工作制 Mode of Operation: S1
- 轴承 Bearings: 免维护深沟球轴承
Maintenance-free ball bearings
- 工作环境温度: -25 °C - +60 °C
Perm.amb.temp.: -25 °C - +60 °C
- 工作电压: 200V - 277V/1P
Operating Voltage: 200V-277V/1P
- 调速方式 Std. Control: 0~10V or PWM



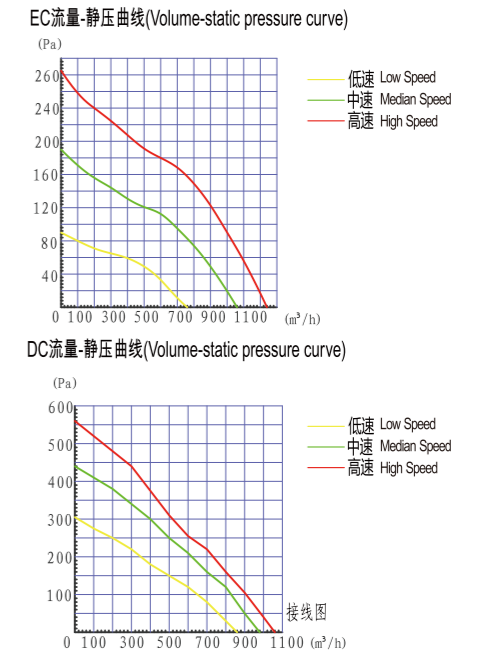
技术参数 Technical data

型号 Model	电压 voltage V	工作电压 operating voltage V	频率 Frequency Hz	电流 Current A	输入功率 Power Input W	转速 Speed r/min	最大风量 Air flow/max m³/h	许用静压 Max.static Pressure Pa	净重 N.W. Kg	噪音 Noise dB
AV2EC146/092/25-1G	230	200-277	50/60	1.3	171	1740	1140	0	5.5	60
AV3DC146/092/25	24	16-28	-	5.1	105	1350	1060	0	6.0	61
AV4DC146/092/25	48	36-57	-	2.6	105	1350	1060	0	6.0	61

airvent

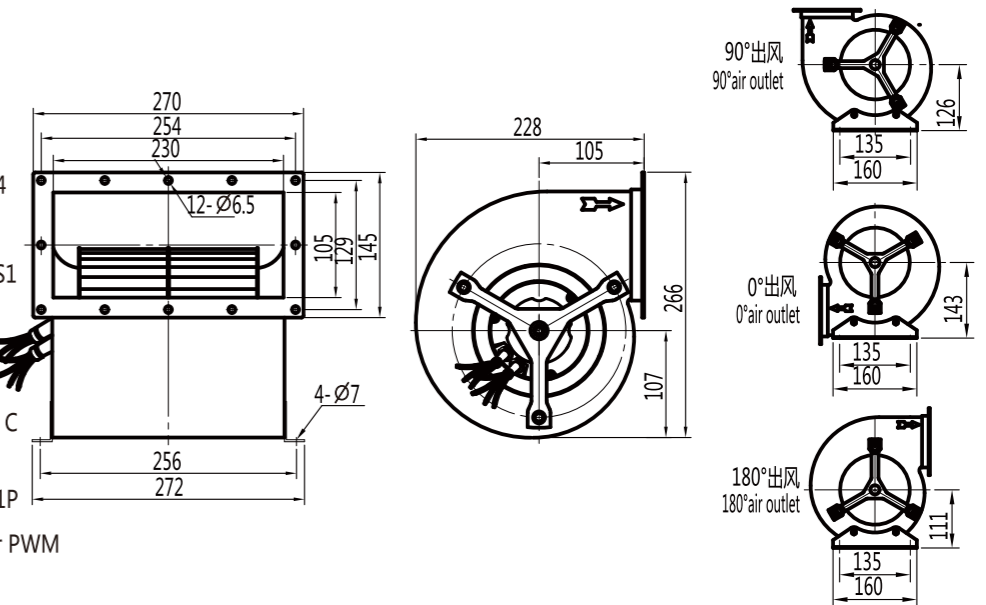
EC/DC160 双进风离心风机

EC/DC Double -inlet Centrifugal Fan



产品特征: Product Characteristic

- 旋转方向 Rotation: 顺时针 CW
- 防护等级 Type of Protection: IP54
- 绝缘等级 Insulation Class: F
- 连续工作制 Mode of Operation: S1
- 轴承 Bearings: 免维护深沟球轴承
Maintenance-free ball bearings
- 工作环境温度: -25 °C - +60 °C
Perm.amb.temp.: -25 °C - +60 °C
- 工作电压: 200V - 277V/1P
Operating Voltage: 200V-277V/1P
- 调速方式 Std. Control: 0~10V or PWM



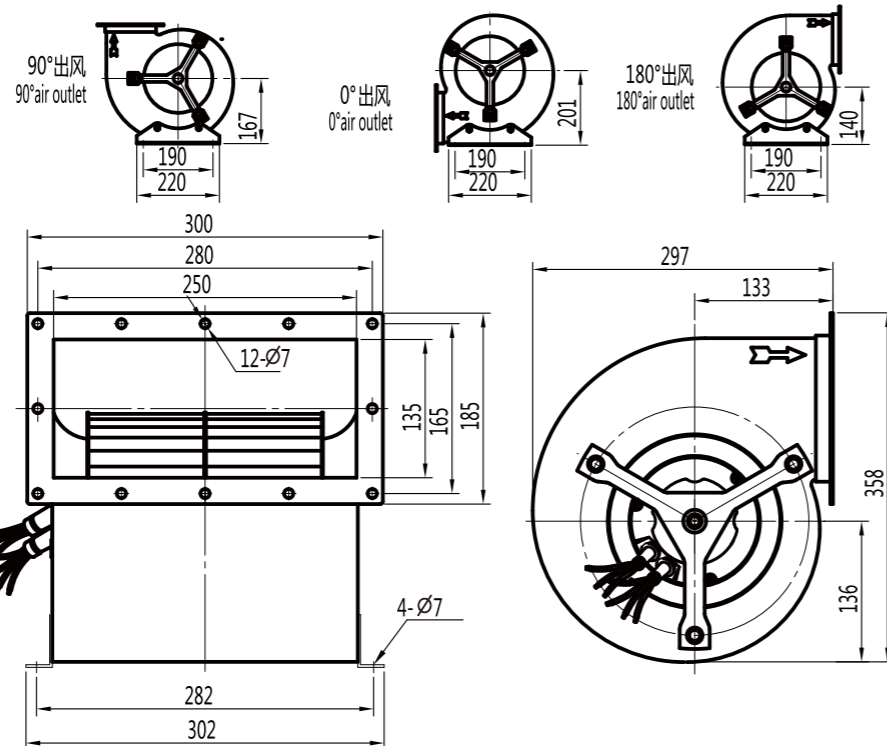
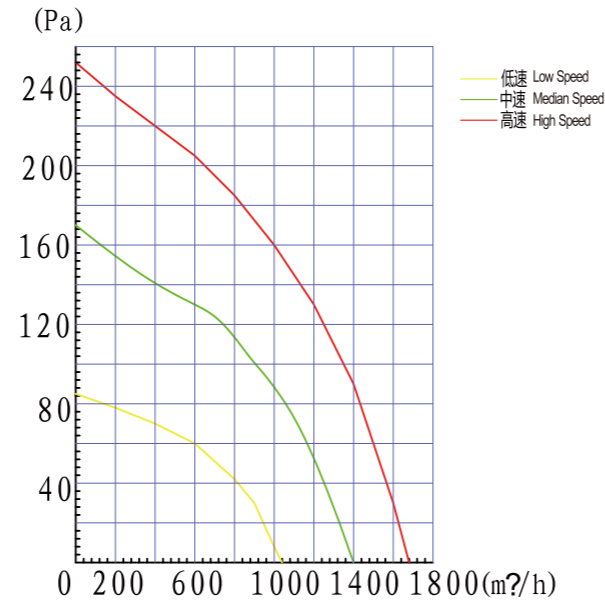
技术参数 Technical data

型号 Model	电压 voltage V	工作电压 operating voltage V	频率 Frequency Hz	电流 Current A	输入功率 Power Input W	转速 Speed r/min	最大风量 Air flow/max m³/h	许用静压 Max.static Pressure Pa	净重 N.W. Kg	噪音 Noise dB
AV2EC160/092/25-1G	230	200-277	50/60	1.2	154	1390	1240	0	4.8	63
AV3DC160/092/25	24	16-28	-	5.6	112	1250	1080	0	4.8	60
AV4DC160/092/25	48	36-57	-	2.9	112	1250	1080	0	4.8	60

airvent

EC180 双进风离心风机

EC Double -inlet Centrifugal Fan



产品特征: Product Characteristic

- 旋转方向 Rotation: 顺时针 CW
- 防护等级 Type of Protection: IP54
- 绝缘等级 Insulation Class: F
- 连续工作制 Mode of Operation: S1
- 轴承 Bearings: 免维护深沟球轴承 Maintenance-free ball bearings
- 工作环境温度: -25 °C - +60 °C Perm.amb.temp.: -25 °C - +60 °C
- 工作电压: 200V - 277V/1P Operating Voltage: 200V-277V/1P
- 调速方式 Std. Control: 0~10V or PWM

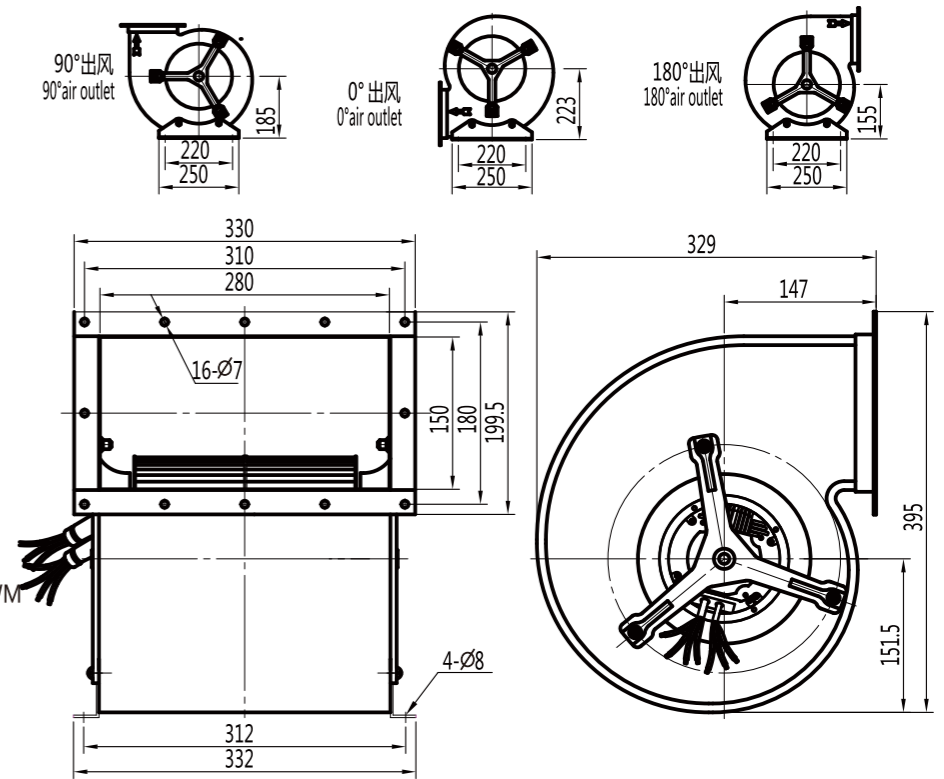
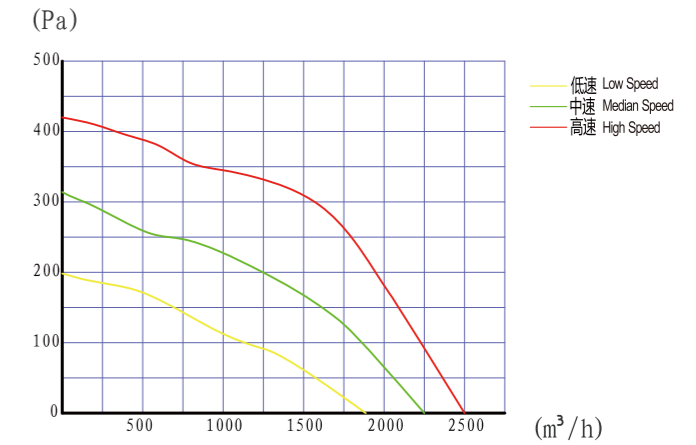
技术参数 Technical data

型号 Model	电压 voltage V	工作电压 operating voltage V	频率 Frequency Hz	电流 Current A	输入功率 Power Input W	转速 Speed r/min	最大风量 Air flow/max m³/h	许用静压 Max.static Pressure Pa	净重 N.W. Kg	噪音 Noise dB
AV2EC180/092/25-1G	230	200-277	50/60	1.22	165	1090	1680	0	10	63

airvent

EC200 双进风离心风机

EC Double -inlet Centrifugal Fan



产品特征: Product Characteristic

- 旋转方向 Rotation: 顺时针 CW
- 防护等级 Type of Protection: IP54
- 绝缘等级 Insulation Class: F
- 连续工作制 Mode of Operation: S1
- 轴承 Bearings: 免维护深沟球轴承 Maintenance-free ball bearings
- 工作环境温度: -25 °C - +60 °C Perm.amb.temp.: -25 °C - +60 °C
- 工作电压: 200V - 277V/1P Operating Voltage: 200V-277V/1P
- 调速方式 Std. Control: 0~10V or PWM

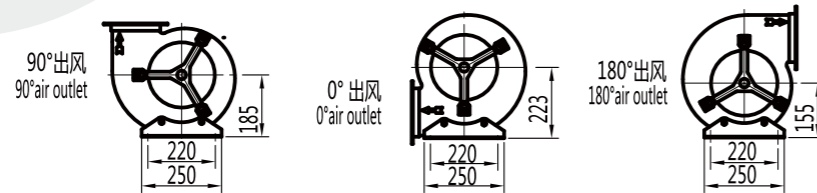
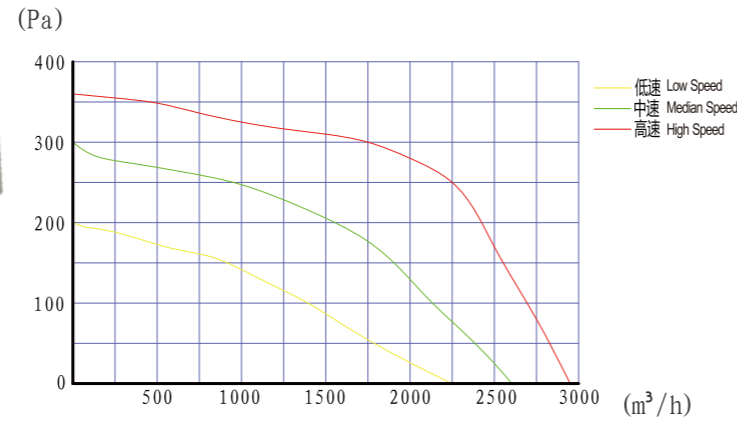
技术参数 Technical data

型号 Model	电压 voltage V	工作电压 operating voltage V	频率 Frequency Hz	电流 Current A	输入功率 Power Input W	转速 Speed r/min	最大风量 Air flow/max m³/h	许用静压 Max.static Pressure Pa	净重 N.W. Kg	噪音 Noise dB
AV2EC200/102/50-1G	230	200-277	50/60	1.55	390	1300	2500	0	10	63

airvent

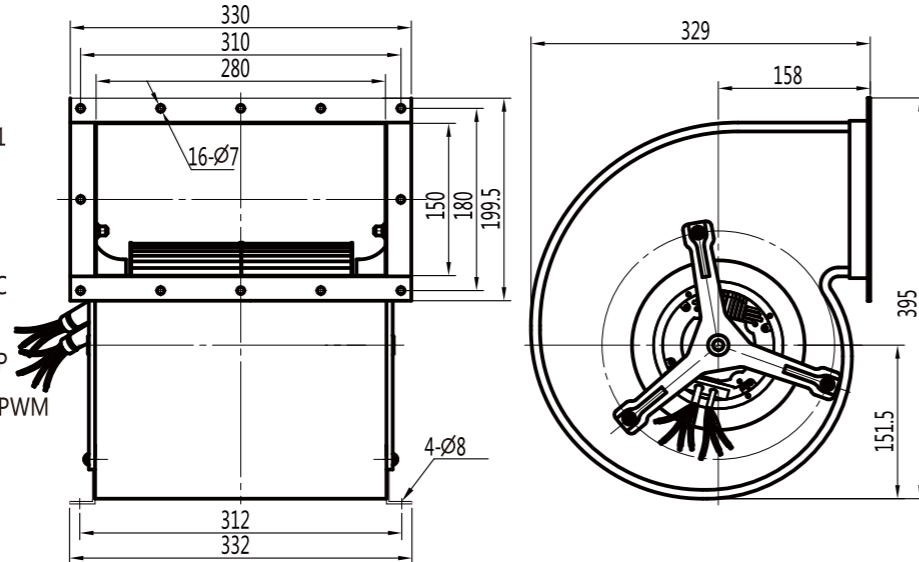
EC225A 双进风离心风机

EC Double -inlet Centrifugal Fan



产品特征: Product Characteristic

- 旋转方向 Rotation: 顺时针 CW
- 防护等级 Type of Protection: IP54
- 绝缘等级 Insulation Class: F
- 连续工作制 Mode of Operation: S1
- 轴承 Bearings: 免维护深沟球轴承
Maintenance-free ball bearings
- 工作环境温度: -25 °C - +60 °C
Perm.amb.temp.: -25 °C - +60 °C
- 工作电压: 200V - 277V/1P
Operating Voltage: 200V-277V/1P
- 调速方式 Std. Control: 0~10V or PWM



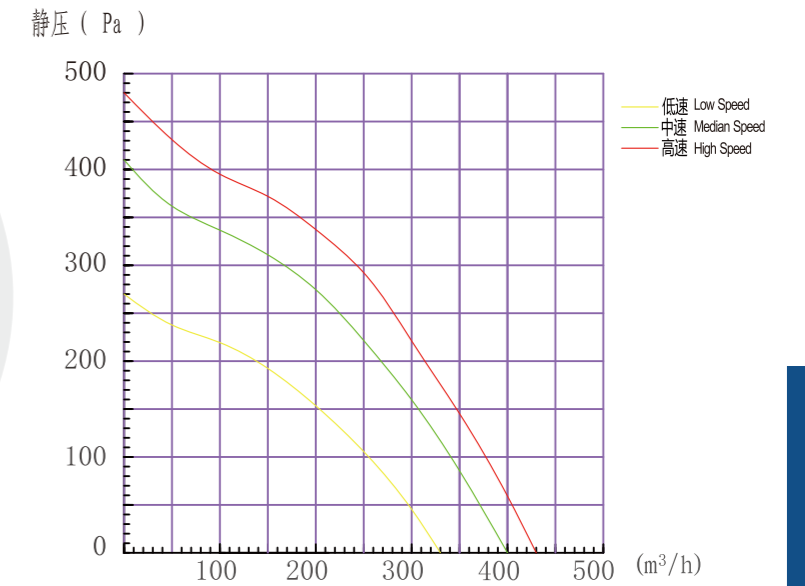
技术参数 Technical data

型号 Model	电压 voltage V	工作电压 operating voltage V	频率 Frequency Hz	电流 Current A	输入功率 Power Input W	转速 Speed r/min	最大风量 Air flow/max m³/h	许用静压 Max.static Pressure Pa	净重 N.W. Kg	噪音 Noise dB
AV2EC225A/102/50-1G	230	200-277	50/60	1.75	450	13	2950	0	10	63

airvent

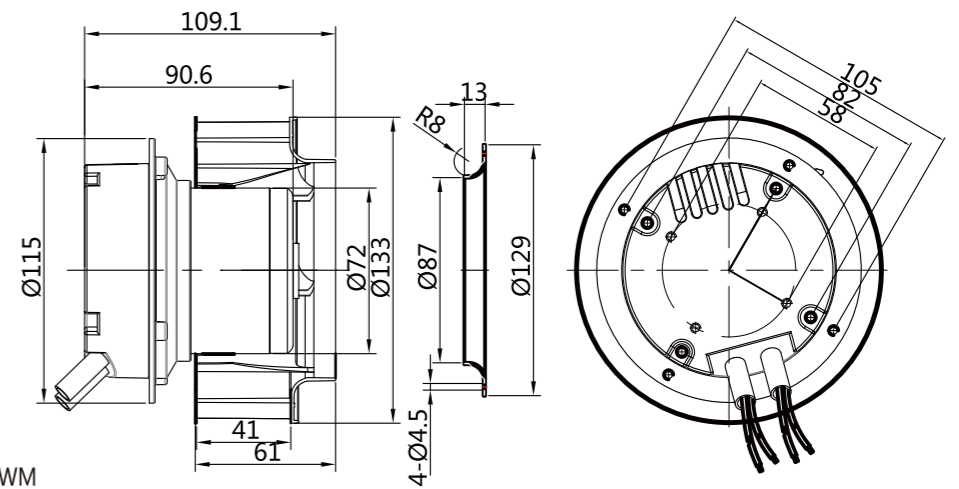
EC/DC133 后向型离心风机

EC/DC Backward Style Centrifugal Fan



产品特征: Product Characteristic

- 旋转方向 Rotation: 顺时针 CW
- 防护等级 Type of Protection: IP54
- 绝缘等级 Insulation Class: F
- 连续工作制 Mode of Operation: S1
- 轴承 Bearings: 免维护深沟球轴承
Maintenance-free ball bearings
- 工作环境温度: -25 °C - +60 °C
Perm.amb.temp.: -25 °C - +60 °C
- 工作电压: 200V - 277V/1P
Operating Voltage: 200V-277V/1P
- 调速方式 Std. Control: 0~10V or PWM



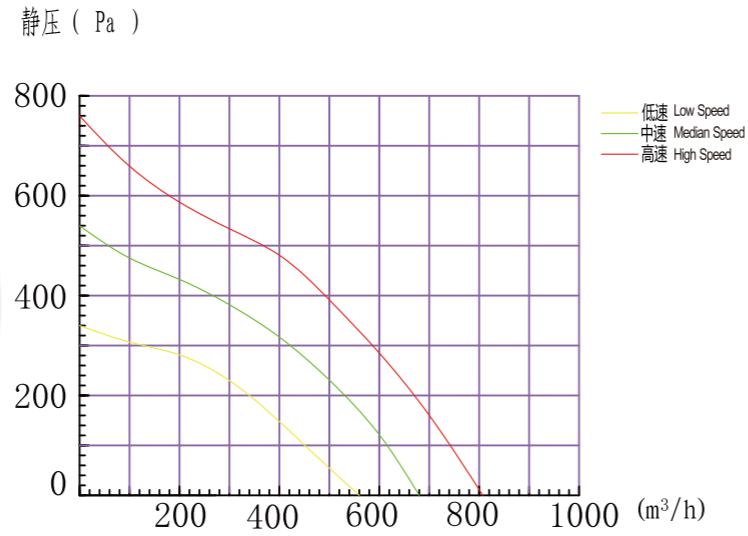
技术参数 Technical data

型号 Model	电压 voltage V	频率 Frequency Hz	电流 Current A	输入功率 Power Input W	转速 Speed r/min	最大风量 Air flow/max m³/h	许用静压 Max.static Pressure Pa	净重 N.W. Kg	噪音 Noise dB
AV2EC133/072/13-1G061	220	50/60	0.4	52	4480	430	-	1.0	63
AV3DC133/072/13-061	24	-	1.3	45	3900	360	-	0.7	63
AV4DC133/072/13-061	48	-	0.7	45	3900	360	-	0.7	63

airvent

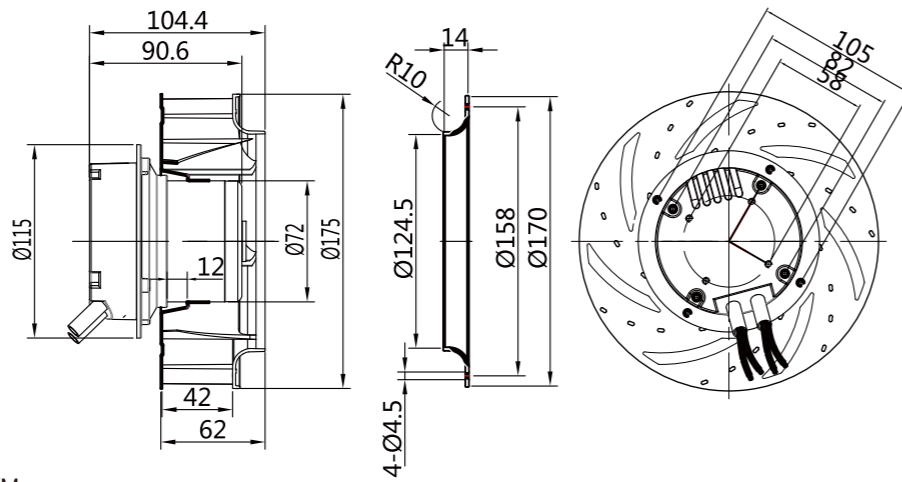
EC/DC175 后向型离心风机

EC/DC Backward Style Centrifugal Fan



产品特征 : Product Characteristic

- 旋转方向 Rotation : 顺时针 CW
- 防护等级 Type of Protection: IP54
- 绝缘等级 Insulation Class: F
- 连续工作制 Mode of Operation: S1
- 轴承 Bearings: 免维护深沟球轴承
Maintenance-free ball bearings
- 工作环境温度: -25 °C - +60 °C
Perm.amb.temp.: -25 °C - +60 °C
- 工作电压: 200V - 277V/1P
Operating Voltage: 200V-277V/1P
- 调速方式 Std. Control : 0~10V or PWM



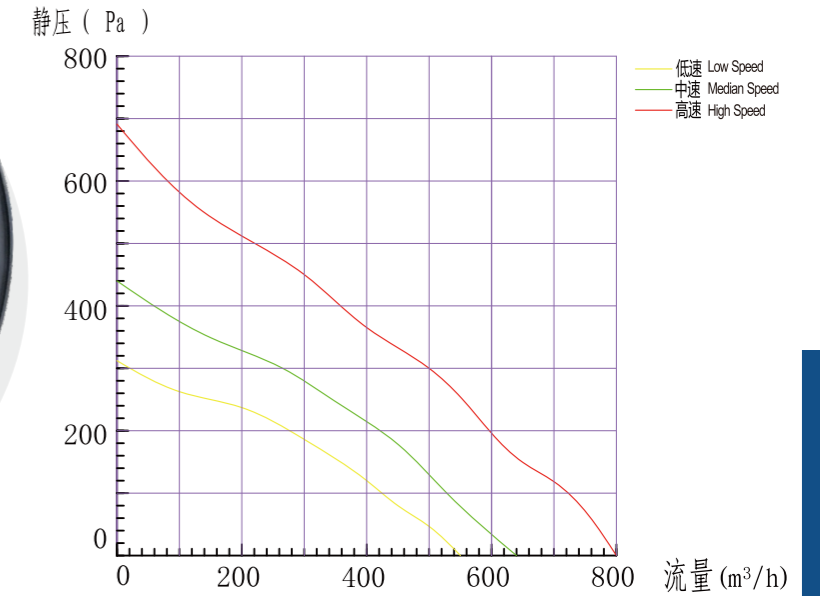
技术参数 Technical data

型号 Model	电压 voltage V	频率 Frequency Hz	电流 Current A	输入功率 Power Input W	转速 Speed r/min	最大风量 Air flow/max m³/h	许用静压 Max.static Pressure Pa	净重 N.W. Kg	噪音 Noise dB
AV2EC175/072/25-1G062	220	50/60	1.0	120	4460	805	-	1.2	68
AV3DC175/072/25-062	24	-	1.6	84	3100	565	-	0.7	63
AV 4DC175/072/25-062	48	-	1.0	84	3100	565	-	0.7	63

airvent

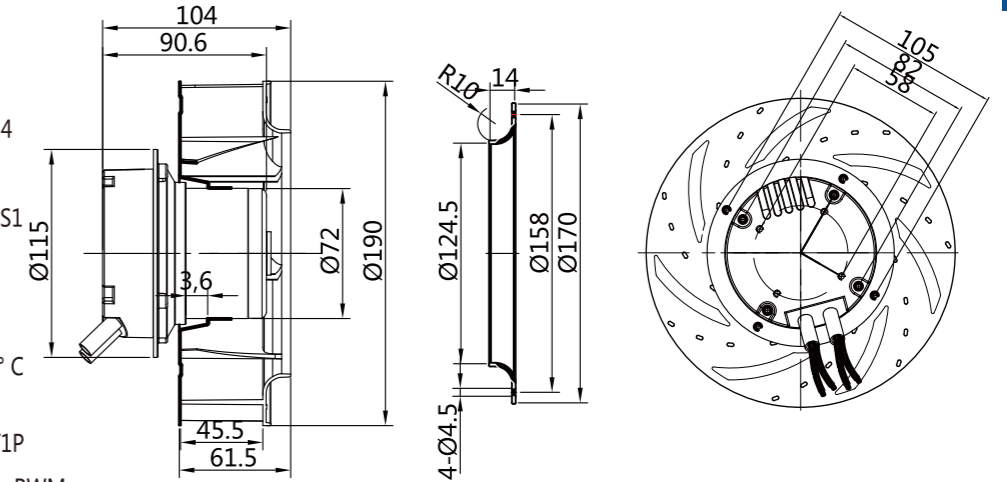
EC/DC190 后向型离心风机

EC/DC Backward Style Centrifugal Fan



产品特征 : Product Characteristic

- 旋转方向 Rotation : 顺时针 CW
- 防护等级 Type of Protection: IP54
- 绝缘等级 Insulation Class: F
- 连续工作制 Mode of Operation: S1
- 轴承 Bearings: 免维护深沟球轴承
Maintenance-free ball bearings
- 工作环境温度: -25 °C - +60 °C
Perm.amb.temp.: -25 °C - +60 °C
- 工作电压: 200V - 277V/1P
Operating Voltage: 200V-277V/1P
- 调速方式 Std. Control : 0~10V or PWM



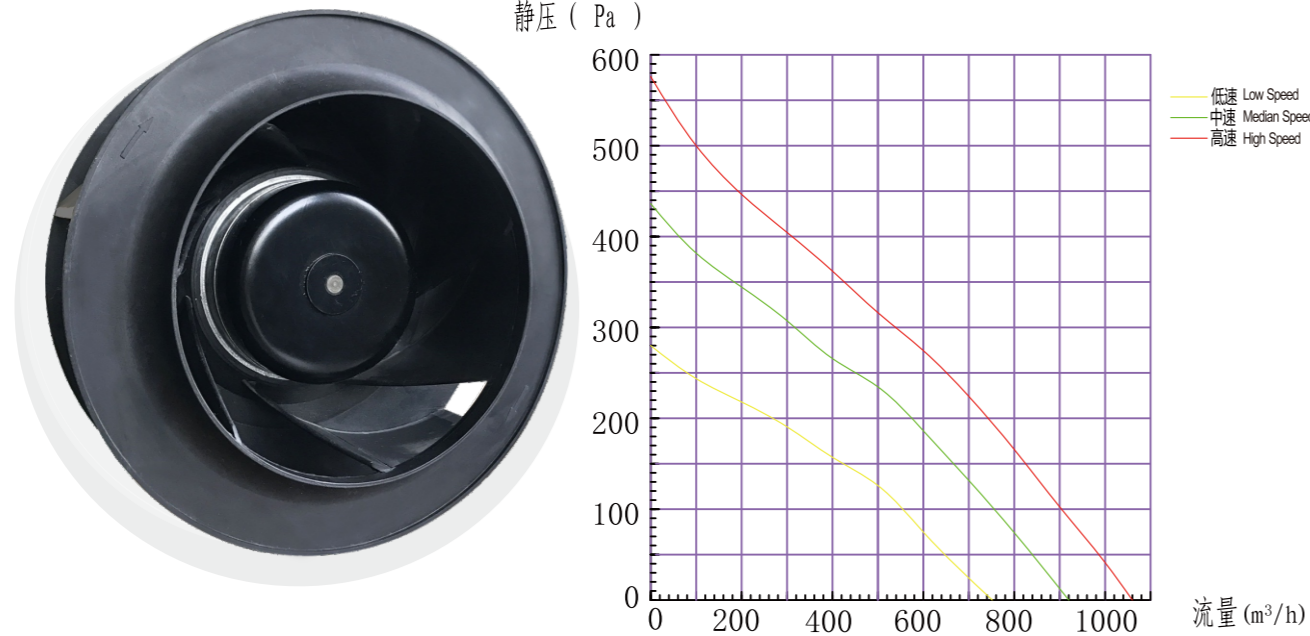
技术参数 Technical data

型号 Model	电压 voltage V	频率 Frequency Hz	电流 Current A	输入功率 Power Input W	转速 Speed r/min	最大风量 Air flow/max m³/h	许用静压 Max.static Pressure Pa	净重 N.W. Kg	噪音 Noise dB
AV2EC190/072/25-1G61.5	220	50/60	0.9	105	3570	800	-	1.3	72
AV3DC190/072/25-61.5	24	-	2.3	87	2950	620	-	1.0	68
AV4DC190/72/25-61.5	48	-	1.2	87	2950	620	-	1.0	68

airvent

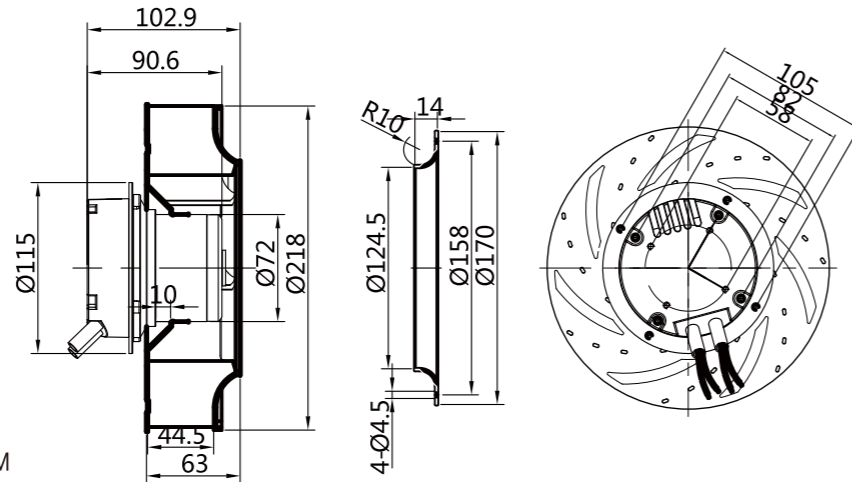
EC/DC220 后向型离心风机

EC/DC Backward Style Centrifugal Fan



产品特征 : Product Characteristic

- 旋转方向 Rotation : 顺时针 CW
- 防护等级 Type of Protection: IP54
- 绝缘等级 Insulation Class: F
- 连续工作制 Mode of Operation: S1
- 轴承 Bearings: 免维护深沟球轴承
Maintenance-free ball bearings
- 工作环境温度: -25 °C - +60 °C
Perm.amb.temp.: -25 °C - +60 °C
- 工作电压: 200V - 277V/1P
Operating Voltage: 200V-277V/1P
- 调速方式 Std. Control : 0~10V or PWM



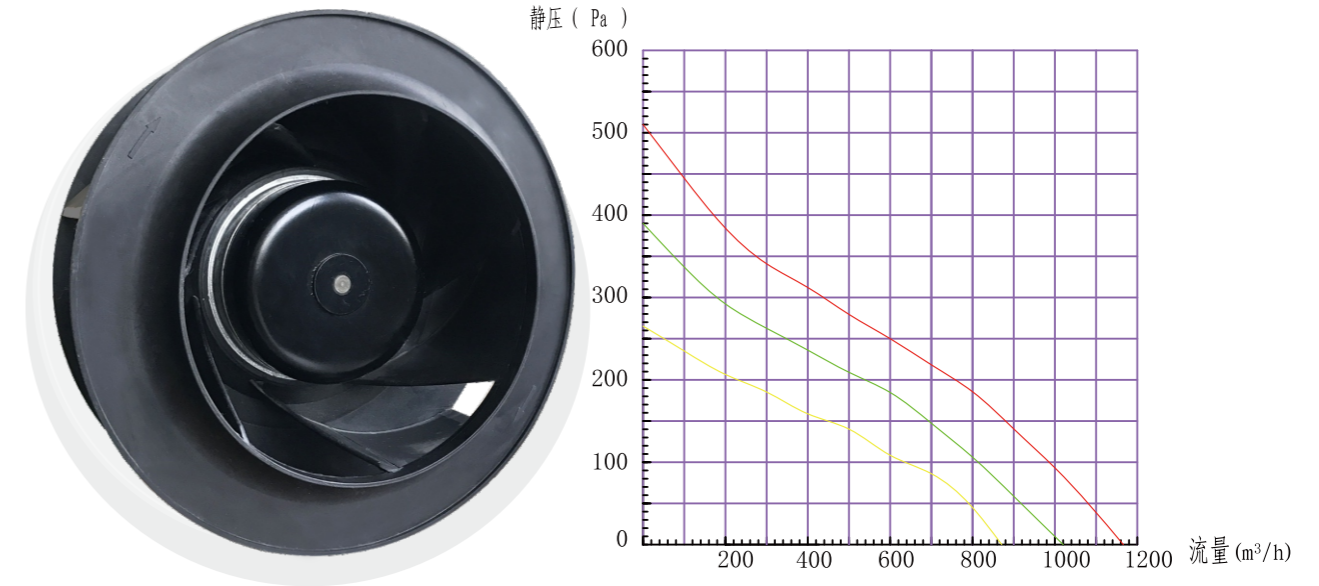
技术参数 Technical data

型号 Model	电压 voltage V	频率 Frequency Hz	电流 Current A	输入功率 Power Input W	转速 Speed r/min	最大风量 Air flow/max m³/h	许用静压 Max.static Pressure Pa	净重 N.W. Kg	噪音 Noise dB
AV2EC220/072/25-1G063	220	50/60	0.8	105	3030	1060	-	1.4	73
AV3DC220/072/25-063	24	-	5.0	106	3030	1060	-	1.4	73
AV4DC220/72/25-063	48	-	2.4	106	3030	1060	-	1.4	73

airvent

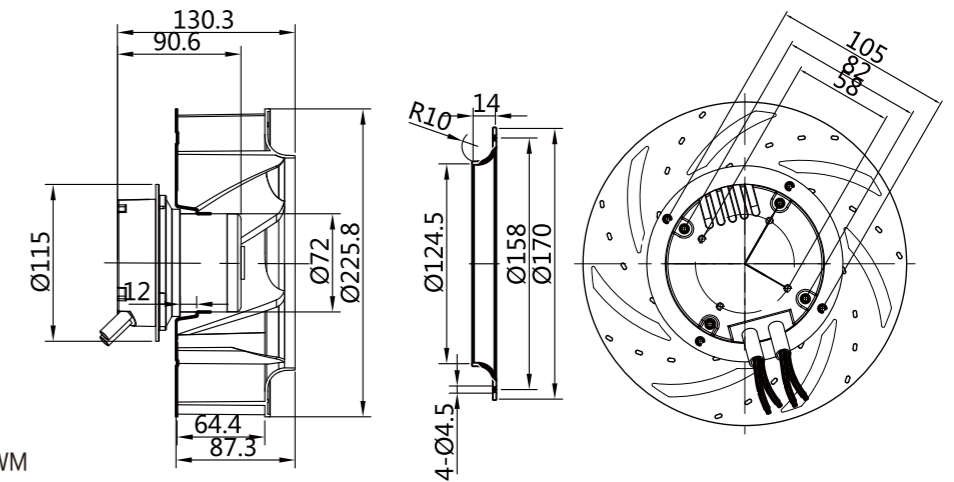
EC/DC225 后向型离心风机

EC/DC Backward Style Centrifugal Fan



产品特征 : Product Characteristic

- 旋转方向 Rotation : 顺时针 CW
- 防护等级 Type of Protection: IP54
- 绝缘等级 Insulation Class: F
- 连续工作制 Mode of Operation: S1
- 轴承 Bearings: 免维护深沟球轴承
Maintenance-free ball bearings
- 工作环境温度: -25 °C - +60 °C
Perm.amb.temp.: -25 °C - +60 °C
- 工作电压: 200V - 277V/1P
Operating Voltage: 200V-277V/1P
- 调速方式 Std. Control : 0~10V or PWM



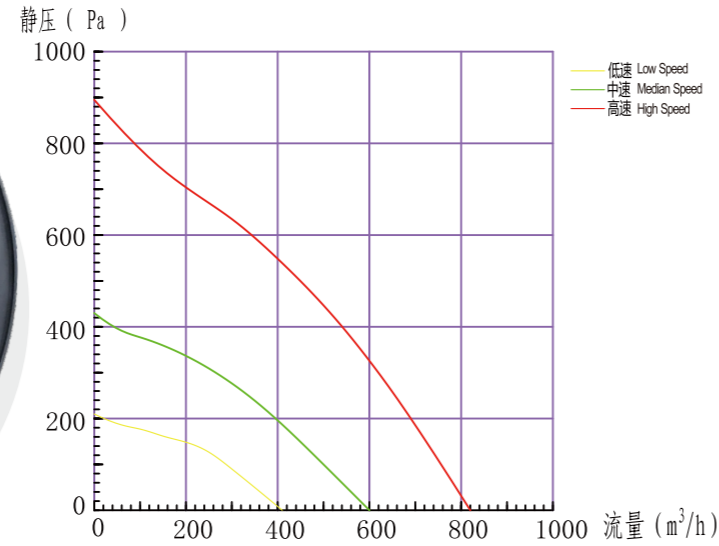
技术参数 Technical data

型号 Model	电压 voltage V	频率 Frequency Hz	电流 Current A	输入功率 Power Input W	转速 Speed r/min	最大风量 Air flow/max m³/h	许用静压 Max.static Pressure Pa	净重 N.W. Kg	噪音 Noise dB
AV2EC225/072/25-1G87.3	220	50/60	0.78	120	3000	1160	-	2.3	72
AV3DC225/072/25-87.3	24	-	4.6	108	2700	1160	-	1.5	67
AV4DC225/72/25-87.3	48	-	2.2	108	2700	1160	-	1.5	67

airvent

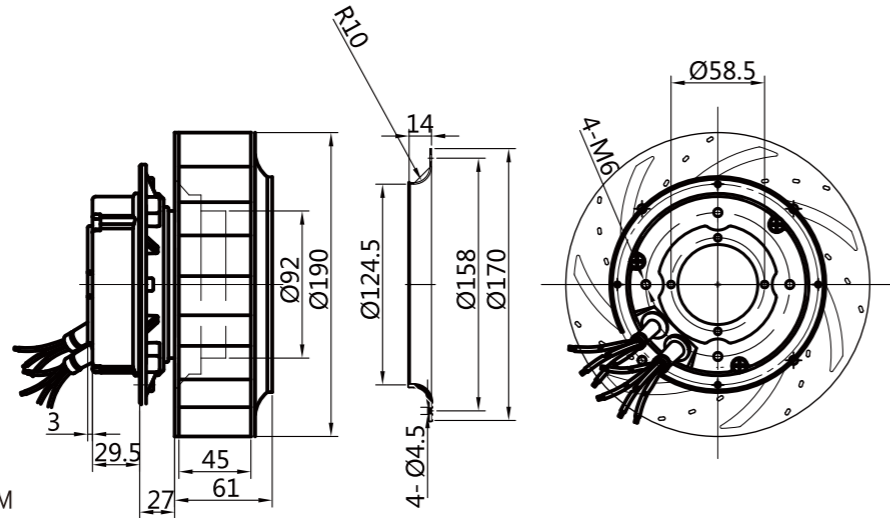
EC/DC190 后向型离心风机

EC/DC Backward Style Centrifugal Fan



产品特征 : Product Characteristic

- 旋转方向 Rotation : 顺时针 CW
- 防护等级 Type of Protection: IP54
- 绝缘等级 Insulation Class: F
- 连续工作制 Mode of Operation: S1
- 轴承 Bearings: 免维护深沟球轴承 Maintenance-free ball bearings
- 工作环境温度: -25 °C - +60 °C Perm.amb.temp.: -25 °C - +60 °C
- 工作电压: 200V - 277V/1P Operating Voltage: 200V-277V/1P
- 调速方式 Std. Control : 0~10V or PWM



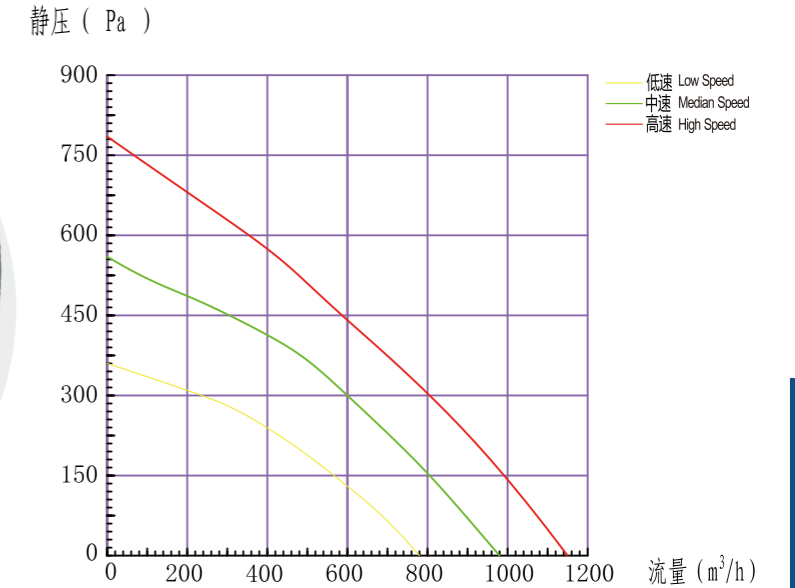
技术参数 Technical data

型号 Model	电压 voltage V	频率 Frequency Hz	电流 Current A	输入功率 Power Input W	转速 Speed r/min	最大风量 Air flow/max m³/h	许用静压 Max.static Pressure Pa	净重 N.W. Kg	噪音 Noise dB
AV2EC190/092/25-1G061	220	50/60	1.03	166	4025	820	-	1.5	75
AV3DC190/092/25-061	24	-	6.5	166	4050	820	-	1.5	75
AV4DC190/092/25-061	48	-	3.25	166	4050	820	-	1.5	75

airvent

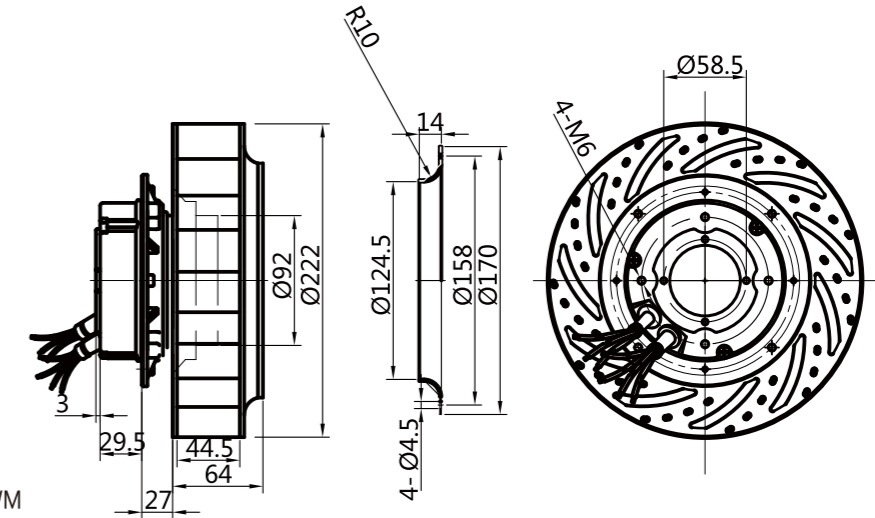
EC/DC220 后向型离心风机

EC/DC Backward Style Centrifugal Fan



产品特征 : Product Characteristic

- 旋转方向 Rotation : 顺时针 CW
- 防护等级 Type of Protection: IP54
- 绝缘等级 Insulation Class: F
- 连续工作制 Mode of Operation: S1
- 轴承 Bearings: 免维护深沟球轴承 Maintenance-free ball bearings
- 工作环境温度: -25 °C - +60 °C Perm.amb.temp.: -25 °C - +60 °C
- 工作电压: 200V - 277V/1P Operating Voltage: 200V-277V/1P
- 调速方式 Std. Control : 0~10V or PWM



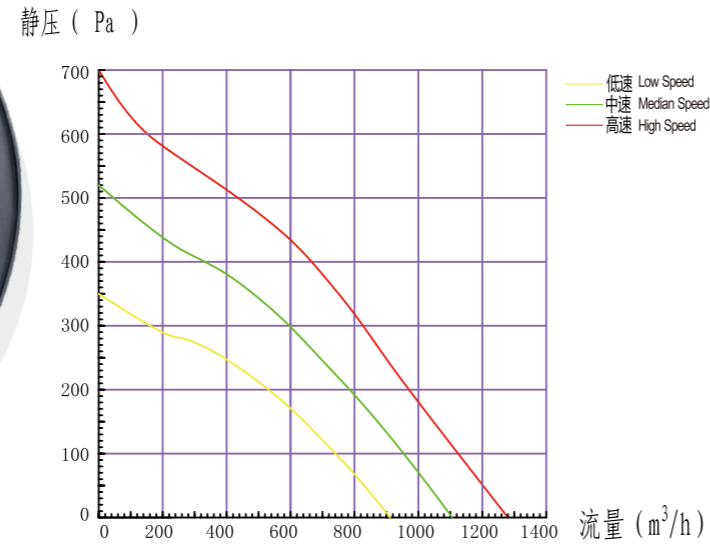
技术参数 Technical data

型号 Model	电压 voltage V	频率 Frequency Hz	电流 Current A	输入功率 Power Input W	转速 Speed r/min	最大风量 Air flow/max m³/h	许用静压 Max.static Pressure Pa	净重 N.W. Kg	噪音 Noise dB
AV2EC220/092/25-1G064	220	50/60	0.84	127	3585	1150	-	2.2	73
AV3DC220/092/25-064	24	-	5.2	127	3585	1150	-	2.2	73
AV4DC220/092/25-064	48	-	2.55	127	3585	1150	-	2.2	73

airvent

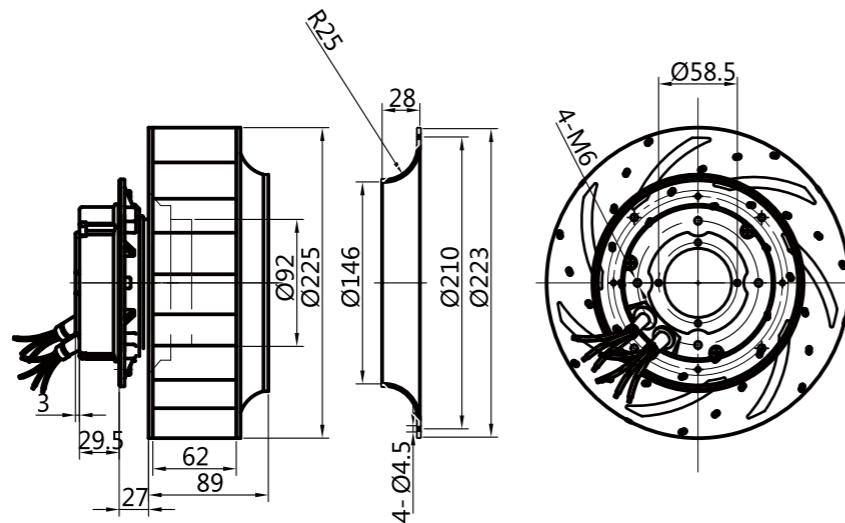
EC/DC225 后向型离心风机

EC/DC Backward Style Centrifugal Fan



产品特征 : Product Characteristic

- 旋转方向 Rotation : 顺时针 CW
- 防护等级 Type of Protection: IP54
- 绝缘等级 Insulation Class: F
- 连续工作制 Mode of Operation: S1
- 轴承 Bearings: 免维护深沟球轴承
Maintenance-free ball bearings
- 工作环境温度: -25 °C - +60 °C
Perm.amb.temp.: -25 °C - +60 °C
- 工作电压: 200V - 277V/1P
Operating Voltage: 200V-277V/1P
- 调速方式 Std. Control : 0~10V or PWM



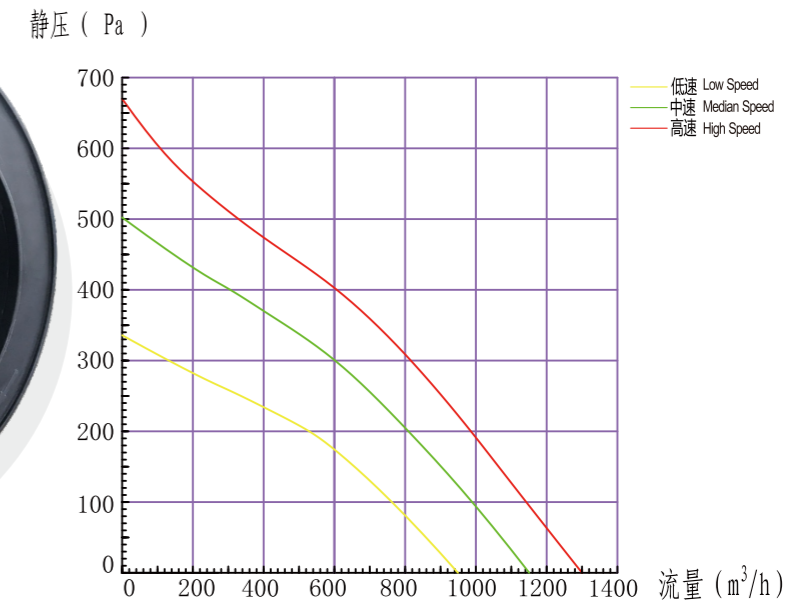
技术参数 Technical data

型号 Model	电压 voltage V	频率 Frequency Hz	电流 Current A	输入功率 Power Input W	转速 Speed r/min	最大风量 Air flow/max m³/h	许用静压 Max.static Pressure Pa	净重 N.W. Kg	噪音 Noise dB
AV2EC225/092/25-1G089	220	50/60	0.78	120	3000	1160	-	2.3	72
AV3DC225/092/25-089	24	-	4.65	120	3000	1160	-	2.3	72
AV4DC225/092/25-089	48	-	2.35	120	3000	1160	-	2.3	72

airvent

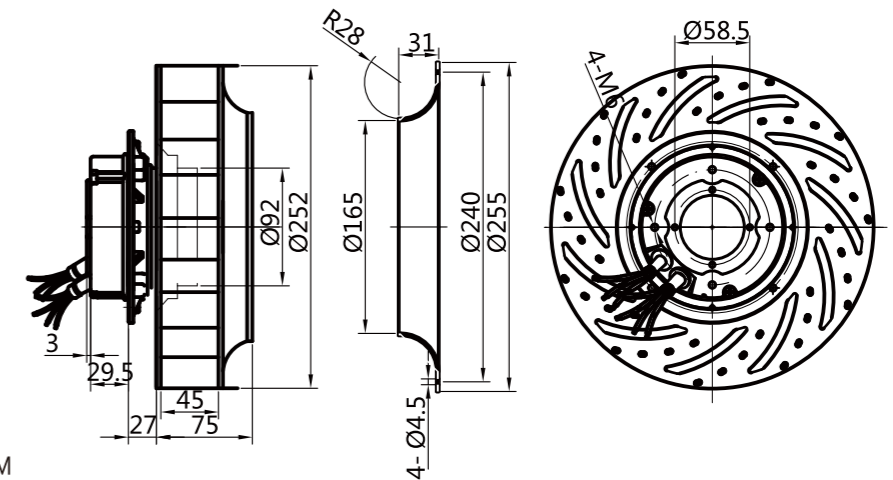
EC/DC250 后向型离心风机

EC/DC Backward Style Centrifugal Fan



产品特征 : Product Characteristic

- 旋转方向 Rotation : 顺时针 CW
- 防护等级 Type of Protection: IP54
- 绝缘等级 Insulation Class: F
- 连续工作制 Mode of Operation: S1
- 轴承 Bearings: 免维护深沟球轴承
Maintenance-free ball bearings
- 工作环境温度: -25 °C - +60 °C
Perm.amb.temp.: -25 °C - +60 °C
- 工作电压: 200V - 277V/1P
Operating Voltage: 200V-277V/1P
- 调速方式 Std. Control : 0~10V or PWM



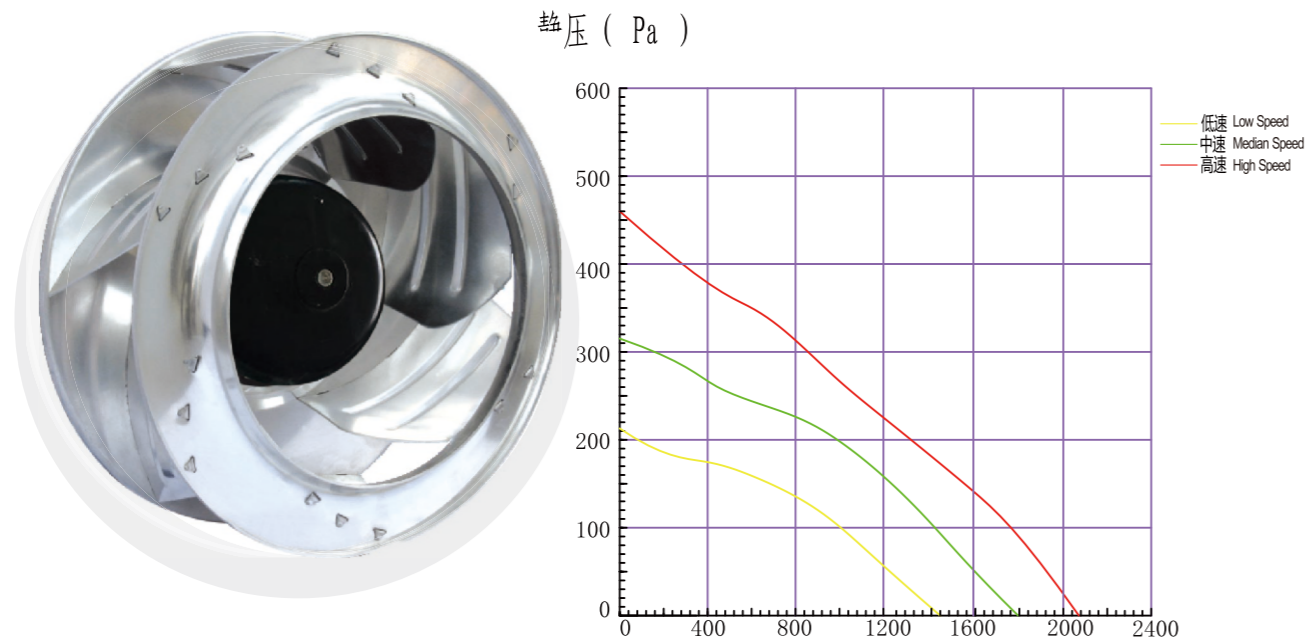
技术参数 Technical data

型号 Model	电压 voltage V	频率 Frequency Hz	电流 Current A	输入功率 Power Input W	转速 Speed r/min	最大风量 Air flow/max m³/h	许用静压 Max.static Pressure Pa	净重 N.W. Kg	噪音 Noise dB
AV2EC250/092/25-1G075	220	50/60	1.25	164	2760	1300	-	2.8	73
AV5DC250/092/25-075	280/340	-	0.26/0.36	79/110	2160/2600	1190/1390	-	2.8	73
AV3DC250/092/25-075	24	-	7.2	165	2800	1300	-	2.8	73
AV4DC250/092/25-075	48	-	3.55	165	2800	1300	-	2.8	73

airvent

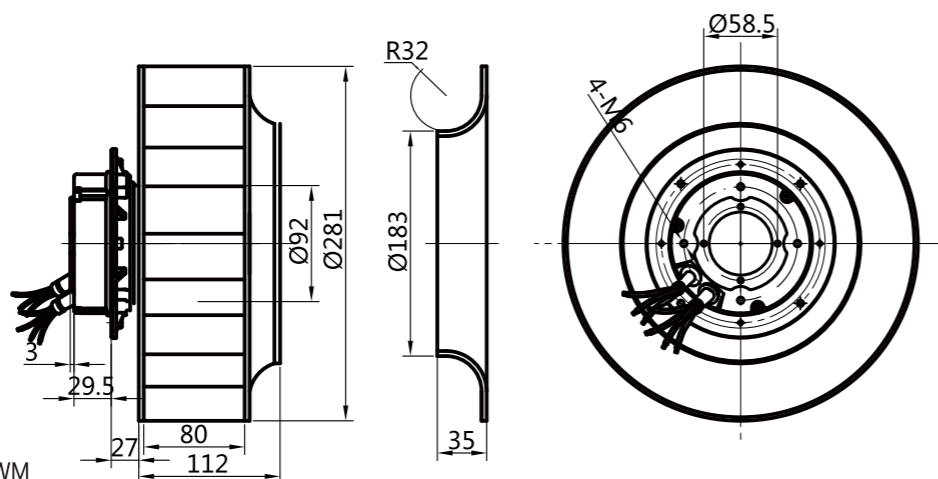
EC/DC280 后向型离心风机

EC/DC Backward Style Centrifugal Fan



**产品特征 :
Product Characteristic**

- 旋转方向 Rotation : 顺时针 CW
- 防护等级 Type of Protection: IP54
- 绝缘等级 Insulation Class: F
- 连续工作制 Mode of Operation: S1
- 轴承 Bearings: 免维护深沟球轴承
Maintenance-free ball bearings
- 工作环境温度: -25 °C - +60 °C
Perm.amb.temp.: -25 °C - +60 °C
- 工作电压 : 200V - 277V/1P
Operating Voltage: 200V-277V/1P
- 调速方式 Std. Control : 0~10V or PWM



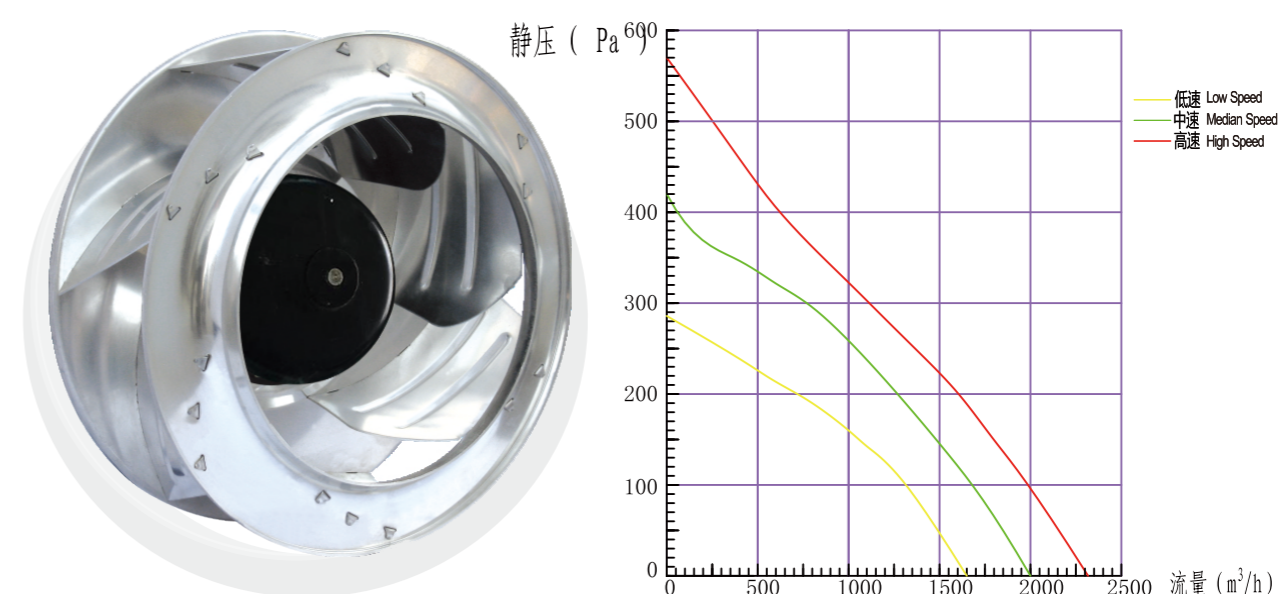
技术参数 Technical data

型号 Model	电压 voltage	频率 Frequency Hz	电流 Current A	输入功率 Power Input W	转速 Speed r/min	最大风量 Air flow/max m³/h	许用静压 Max.static Pressure Pa	净重 N.W. Kg	噪音 Noise dB
AV2EC280/092/25-1G112		50/60	0.63	93	2200	2080	-	3.5	74
AV3DC280/092/25-112		-	3.65	93	2200	2080	-	3.5	74
AV4DC280/092/25-112		-	1.85	93	2200	2080	-	3.5	74

airvent

EC/DC315 后向型离心风机

EC/DC Backward Style Centrifugal Fan



**产品特征 :
Product Characteristic**

- 旋转方向 Rotation : 顺时针 CW
- 防护等级 Type of Protection: IP54
- 绝缘等级 Insulation Class: F
- 连续工作制 Mode of Operation: S1
- 轴承 Bearings: 免维护深沟球轴承
Maintenance-free ball bearings
- 工作环境温度: -25 °C - +60 °C
Perm.amb.temp.: -25 °C - +60 °C
- 工作电压 : 200V - 277V/1P
Operating Voltage: 200V-277V/1P
- 调速方式 Std. Control : 0~10V or PWM

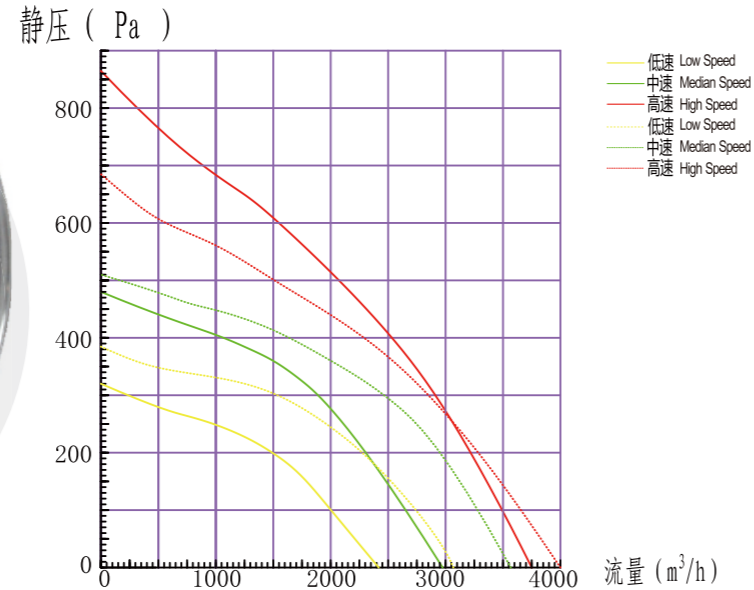
技术参数 Technical data

型号 Model	电压 voltage	频率 Frequency Hz	电流 Current A	输入功率 Power Input W	转速 Speed r/min	最大风量 Air flow/max m³/h	许用静压 Max.static Pressure Pa	净重 N.W. Kg	噪音 Noise dB
AV2EC315/092/25-1G139		50/60	1.1	157	1770	1840	-	3.7	65
AV3DC315/092/25-139		-	6.5	157	1770	1840	-	3.7	65
AV4DC315/092/25-139		-	3.05	157	1770	1840	-	3.7	65

airvent

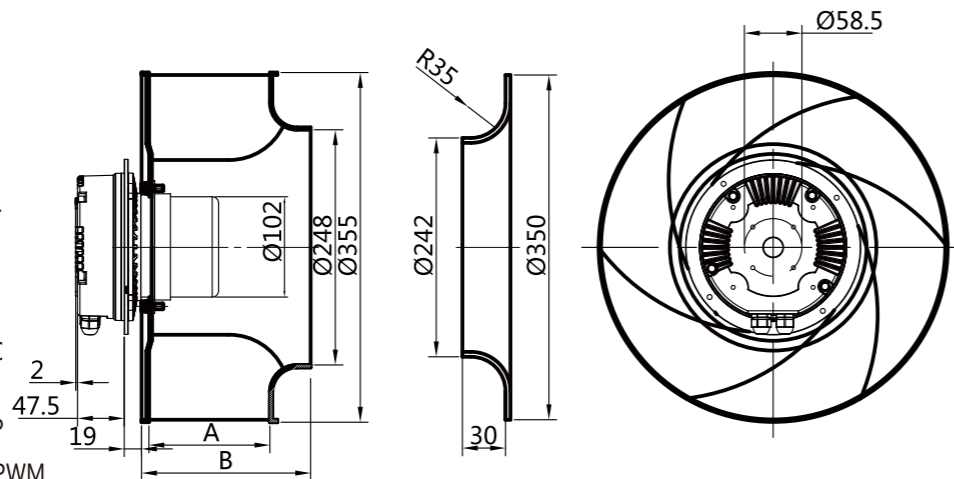
EC355 后向型离心风机

EC Backward Style Centrifugal Fan



产品特点：
Product Characteristic

- 旋转方向 Rotation：顺时针 CW
- 防护等级 Type of Protection: IP54
- 绝缘等级 Insulation Class: F
- 连续工作制 Mode of Operation: S1
- 轴承 Bearings: 免维护深沟球轴承
Maintenance-free ball bearings
- 工作环境温度：-25 °C - +60 °C
Perm.amb.temp.: -25 °C - +60 °C
- 工作电压：200V - 277V/1P
Operating Voltage: 200V-277V/1P
- 调速方式 Std. Control：0~10V or PWM



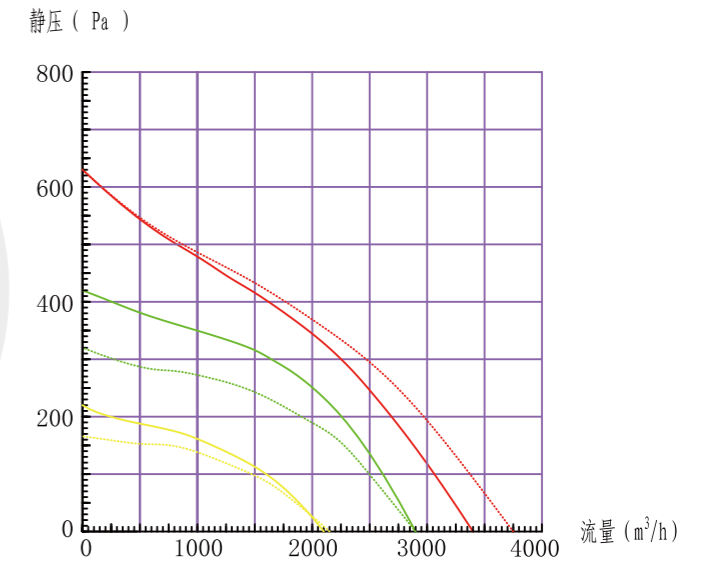
技术参数 Technical data

型号 Model	电压 voltage	频率 Frequency Hz	电流 Current A	输入功率 Power Input W	转速 Speed r/min	最大风量 Air flow/max m³/h	许用静压 Max static Pressure Pa	净重 N.W. Kg	噪音 Noise dB	A mm	B mm
AV2EC355/102/50-1G150	220	50/60	3.15	500	1980	3750	-	5.8	71	90	150
AV2EC355/102/50-1G172	220	50/60	2.9	450	1770	4000	-	5.8	71	123	172

airvent

EC400 后向型离心风机

EC Backward Style Centrifugal Fan



产品特点：
Product Characteristic

- 旋转方向 Rotation：顺时针 CW
- 防护等级 Type of Protection: IP54
- 绝缘等级 Insulation Class: F
- 连续工作制 Mode of Operation: S1
- 轴承 Bearings: 免维护深沟球轴承
Maintenance-free ball bearings
- 工作环境温度：-25 °C - +60 °C
Perm.amb.temp.: -25 °C - +60 °C
- 工作电压：200V - 277V/1P
Operating Voltage: 200V-277V/1P
- 调速方式 Std. Control：0~10V or PWM

技术参数 Technical data

型号 Model	电压 voltage	频率 Frequency Hz	电流 Current A	输入功率 Power Input W	转速 Speed r/min	最大风量 Air flow/max m³/h	许用静压 Max static Pressure Pa	净重 N.W. Kg	噪音 Noise dB	A mm	B mm
AV2EC400/102/50-1G142	220	50/60	2.2	360	1460	3480	-	6.2	68	90	142
AV2EC400/102/50-1G186	220	50/60	2.5	410	1410	3750	-	6.2	68	140	186

AVQ67&AVM71 系列高效节能电机 产品简介

Product Introduction

一、介绍 (Introduce) :

为了促进产品的节能、环保、高效等特点, AVQ67与AVM71系列小电机采用了先进的电子控制技术,使电机的效率得到大幅度的提高,在达到高效率的同时,又保证了与原先YZF系列罩极电机外部安装尺寸一致,电机的附件如风叶,网罩,法兰,支架等均可通用,实现了YZF系列电机与CEQ67及ECM71系列电机的无差异替换。采用电子控制的电机相比原先YZF系列电机的节能优势非常明显,最高效率能达到70%,大幅度减少了电能的消耗,不仅如此,由于采用了电子控制技术,使得电机本身发热非常小从而使整个制冷系统更加高效,电机运行更加稳定可靠。

Emphasizing on energy saving, environmental protection and high efficiency, EC shaded-pole motor (AVQ67 and AVM71 series) are designed with advanced electronic control unit. The electronic control technology increase the motor efficiency greatly, while it maintains the similar external dimensions as the original YZF Shaded-pole motor. The accessories such as grid, fan blades, flange and bracket are the same as original YZF series', therefore EC motor could completely replace YZF series without any changes. Compare with previous products, EC motor could be 70% more efficient, reduce the electric consumption greatly. Meanwhile, with help from electric control technology, the heating of EC motor itself is very low, it could help the entire refrigeration system works more efficient and stable.

二、型号说明 (Model specification) :

AVM 71 08 12 B 2

① ② ③ ④ ⑤ ⑥

① 风机系列编号/Fan series number

AVM: 塑料外壳节能电机/Electronically Commutated with Plastic Cover
AVQ: 铝壳节能电机/Electronically Commutated with Aluminum Cover

② 电机定子冲片外径/Diameter of Laminated core

③ 定子冲片叠厚/Thickness of laminated core

④ 额定输入功率/Related input Power

⑤ 电子信息/Key for electrical design

A-标准; B-正反转; C-上电反转; D-双速; E-无极调速
A: standard B: CW&CCW C: Timed Reverse D: Dual Speed E: Step Speed variation

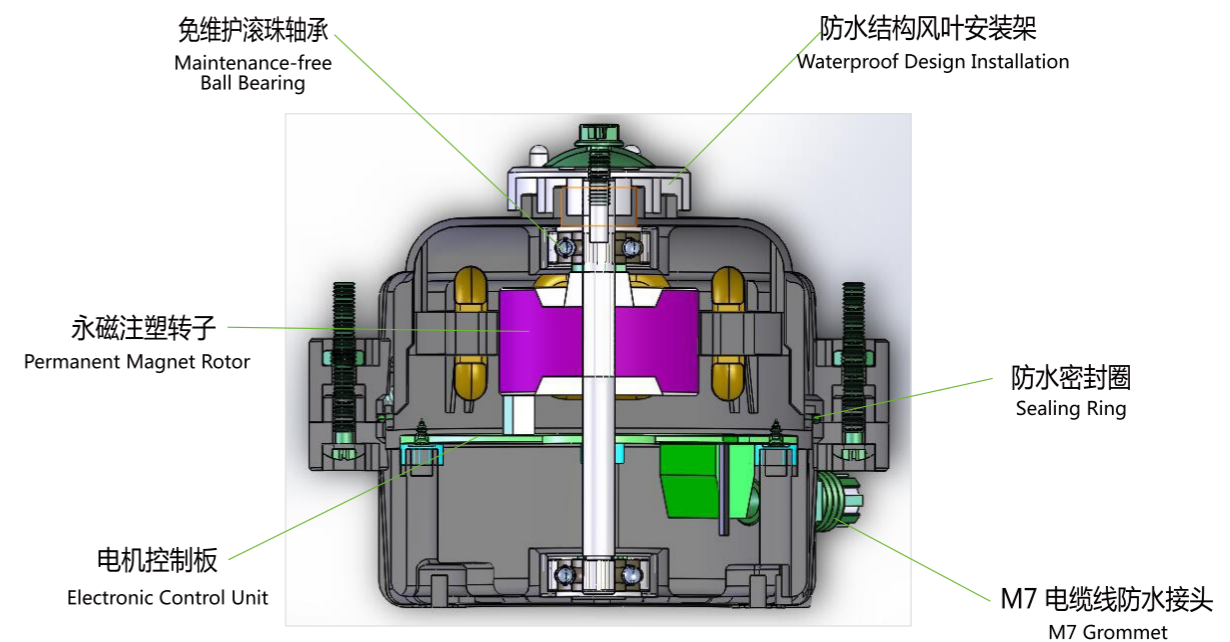
⑥ 电压/Voltage

AVM 及 AVQ 电机概览

Overview Of AVM/AVQ Motors

安装尺寸 /Mounting dimensions	与 AV 罩极电机一致 /Totally same as traditional shaded-pole motors
电压 /Voltage	AC100V-120V;AC160V-250V;DC24V
额定输出功率 /Output Power	7W; 12W; 25W
转向 /Rotation direction	单转向 CCW 上电反转 /Reverse on start 可控制正反转 /Reverse on demand
转速 /Speed	单一转速, 两档转速 /Single speed, 2 speeds.
绝缘等级 /Insulation class	B/F
使用环境温度 /Working ambient temperature	-40 ° C~50 ° C
安装方式 /Mounting Option	网罩、法兰、支架、端盖 /Grid,Flange,Bracket
工作方式 /Operating mode	连续 (S1)
防护等级 /Type of Protection	IP65
轴承 /Bearings	免维护滚珠轴承 /Maintenance-free ball bearing
电机保护 /Motor protection	软件保护 /Via electronics
运行寿命 /Service life	50000 小时 /50000 hours

四、电机结构图

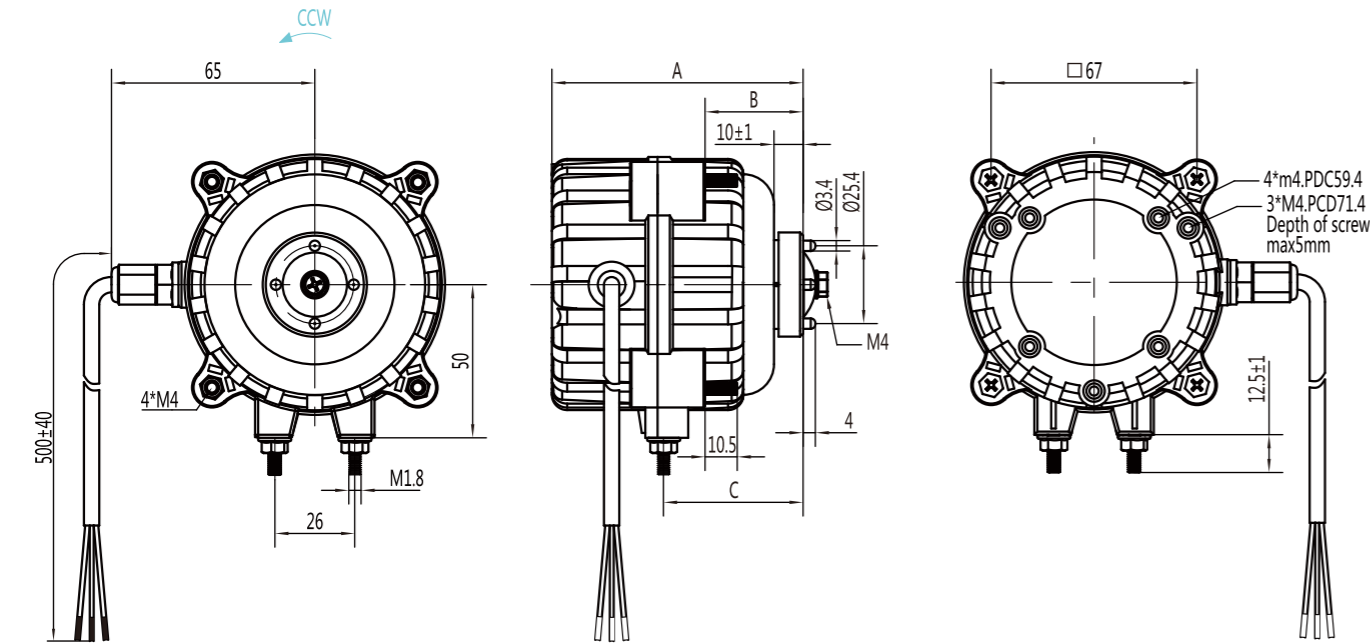


EC 罩极电机

EC Shaded-Pole Motor

技术参数 Technical data

Nominal data		Voltage	Frequency	Speed	Output capacity	Perm.amb.temp	Dimensions		
Type	Features	V	Hz	r/min	W	°C	A	B	C
AVM7108	Standard CW/CCW 2 Speeds Vari-speed	AC110/220	50/60	1300-1800	7	-40 ~ +50	83	32.5	43.5
	Vari-speed	DC24	—	1300-1800	7	-40 ~ +50			
AVM7112	Standard CW/CCW 2 Speeds Vari-speed	AC110/220	50/60	1300-1800	12	-40 ~ +50	87	32.5	43.5
	Vari-speed	DC24	—	1300-1800	12	-40 ~ +50			
AVM7120	Standard CW/CCW 2 Speeds Vari-speed	AC110/220	50/60	1300-1800	25	-40 ~ +50	95	32.5	43.5
	Vari-speed	DC24	—	1300-1800	25	-40 ~ +50			

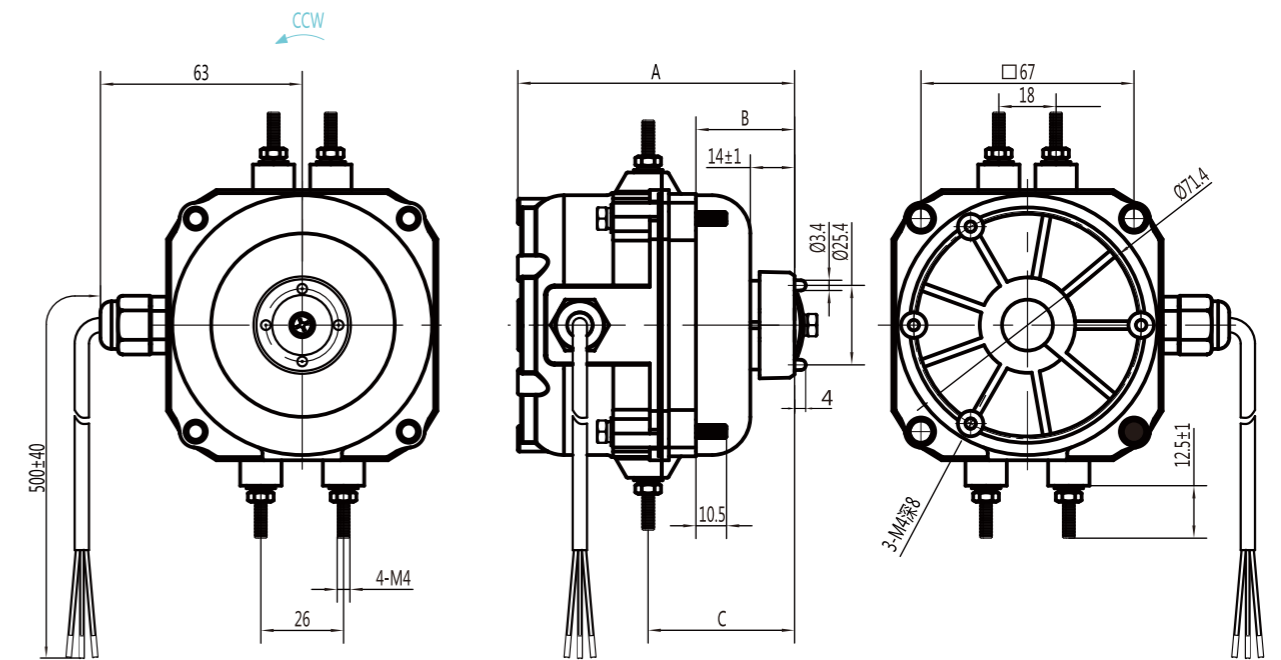


EC 罩极电机

EC Shaded-Pole Motor

技术参数 Technical data

Nominal data		Voltage	Frequency	Speed	Output capacity	Perm.amb.temp	Dimensions		
Type	Features	V	Hz	r/min	W	°C	A	B	C
AVQ6708	Standard CW/CCW 2 Speeds Vari-speed	AC110/220	50/60	1300-1800	7	-40 ~ +50	87	31	46
	Vari-speed	DC24	—	1300-1800	7	-40 ~ +50			
AVQ6712	Standard CW/CCW 2 Speeds Vari-speed	AC110/220	50/60	1300-1800	12	-40 ~ +50	91	31	46
	Vari-speed	DC24	—	1300-1800	12	-40 ~ +50			
AVQ6720	Standard CW/CCW 2 Speeds Vari-speed	AC110/220	50/60	1300-1800	25	-40 ~ +50	99	31	47
	Vari-speed	DC24	—	1300-1800	25	-40 ~ +50			



AVM 及 AVQ 电机概览

Overview Of AVM/AVQ Motors

Speed	FAN				
	Ø170	Ø200	Ø230	Ø250	Ø300
1300r/min		19 °	19 °	19 °	19 °
	22 °		22 °	22 °	22 °
	25 °	25 °	25 °	25 °	25 °
	28 °	28 °	28 °	28 °	28 °
	31 °	31 °	31 °	31 °	31 °
1550r/min	34 °	34 °	34 °	34 °	34 °
		19 °	19 °	19 °	19 °
	22 °	22 °	22 °	22 °	22 °
	25 °	25 °	25 °	25 °	25 °
	28 °	28 °	28 °	28 °	28 °
	31 °	31 °	31 °	31 °	31 °
	34 °	34 °	34 °	34 °	34 °

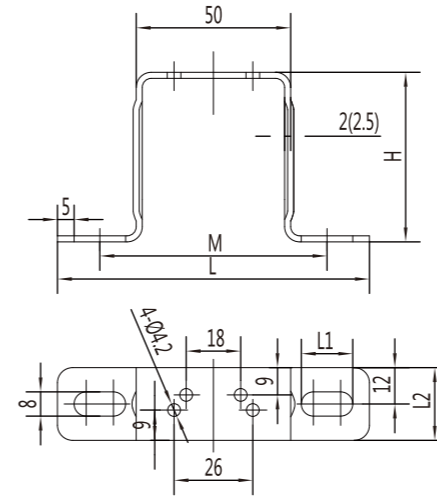
AVM7108/AVQ6708	
AVM7112/AVQ6712	
AVM7120/AVQ6720	

电机型号 Motor Model	许用电压范围 Nominal voltage range	频率 Frequency	额定转速 Speed	额定输入功率 Input Power	额定输出功率 Output Power	额定电压 Voltage	电 流 Current	适用环境温度 Permissible ambient temp.	风叶尺寸 Blade size	风叶角度 Angle of blade
	(VAC)	(Hz)	(rpm)	(W)	(W)	(V)	(A)	(°C)	(mm)	(°)
AVM7108 AVQ6708	160 ~ 250	50/60	1300	4.5	2	230	0.12	-40 ~ +50	170	28
	160 ~ 250	50/60	1300	7.8	3.5	230	0.12	-40 ~ +50	200	25
	160 ~ 250	50/60	1300	8.8	4	230	0.12	-40 ~ +50	200	28
	160 ~ 250	50/60	1300	7	3.2	230	0.12	-40 ~ +50	230	19
	160 ~ 250	50/60	1300	9	4.2	230	0.12	-40 ~ +50	230	22
	160 ~ 250	50/60	1300	13	6.2	230	0.12	-40 ~ +50	230	25
	160 ~ 250	50/60	1300	16	7.8	230	0.12	-40 ~ +50	230	28
	160 ~ 250	50/60	1300	8	3.6	230	0.12	-40 ~ +50	250	19
AVM7112 AVQ6712	160 ~ 250	50/60	1300	10	4.7	230	0.12	-40 ~ +50	250	22
	160 ~ 250	50/60	1300	11.5	6.2	230	0.16	-40 ~ +50	230	28
	160 ~ 250	50/60	1300	14	7.5	230	0.16	-40 ~ +50	250	25
	160 ~ 250	50/60	1300	19.5	9	230	0.16	-40 ~ +50	250	28
AVM7120 AVQ6720	160 ~ 250	50/60	1300	21.5	9.5	230	0.16	-40 ~ +50	300	19
	160 ~ 250	50/60	1300	15.5	9	230	0.29	-40 ~ +50	250	28
	160 ~ 250	50/60	1300	15	9.5	230	0.29	-40 ~ +50	300	19
	160 ~ 250	50/60	1300	23	14.5	230	0.29	-40 ~ +50	300	22
	160 ~ 250	50/60	1300	26.5	17.5	230	0.29	-40 ~ +50	300	25
160 ~ 250	50/60	1300	38	25	230	0.29	-40 ~ +50	300	28	

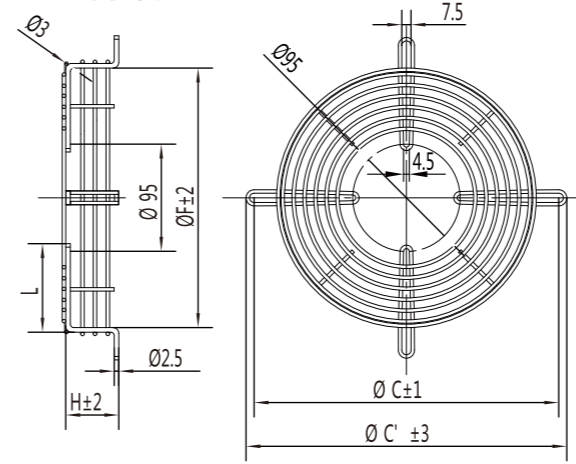
电机附件 – 轴式电机

Electrical Accessories-Shaded-pole Motor

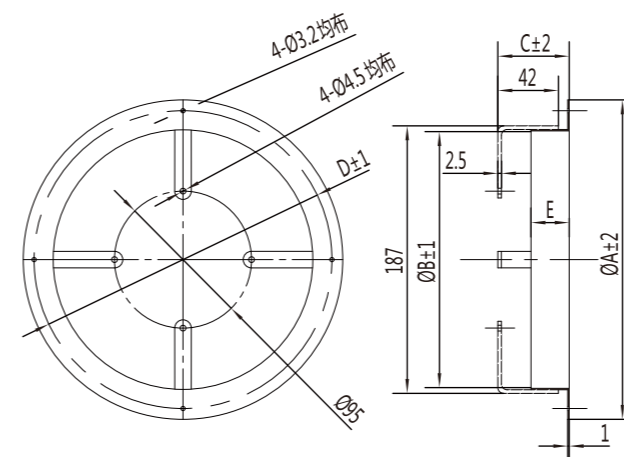
• 支架/BACKET



• 网罩/GRID



• 法兰/FLANGE



MODEL	H	L	L1	L2	M
H56	56	105	17	24	75
H72	72	105	13	24	75
H84	84	105	20	24	75
H84	84	166	18	25	126
H90	90	110	17	24	80
H110	110	106	14	42	83
H110	110	106	14	50	83

MODEL	C'	C	F	H	L
40W	277	264	222	39	70
60W	327	314	272	49	96
75W	337	324	280	49	100
90W	377	364	319	49	120

SIZE	Ø A	Ø B	C	Ø D	E
172	223	180	49	208	25
200	246	208	49	236	25
230	278	238	49	266	25
254	300	262	49	290	25
300	378	308	49	365	30